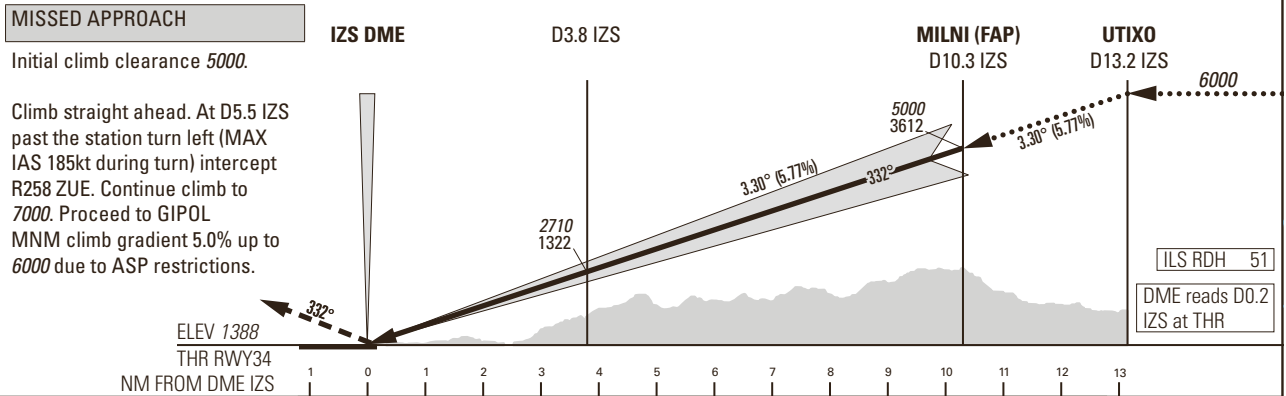
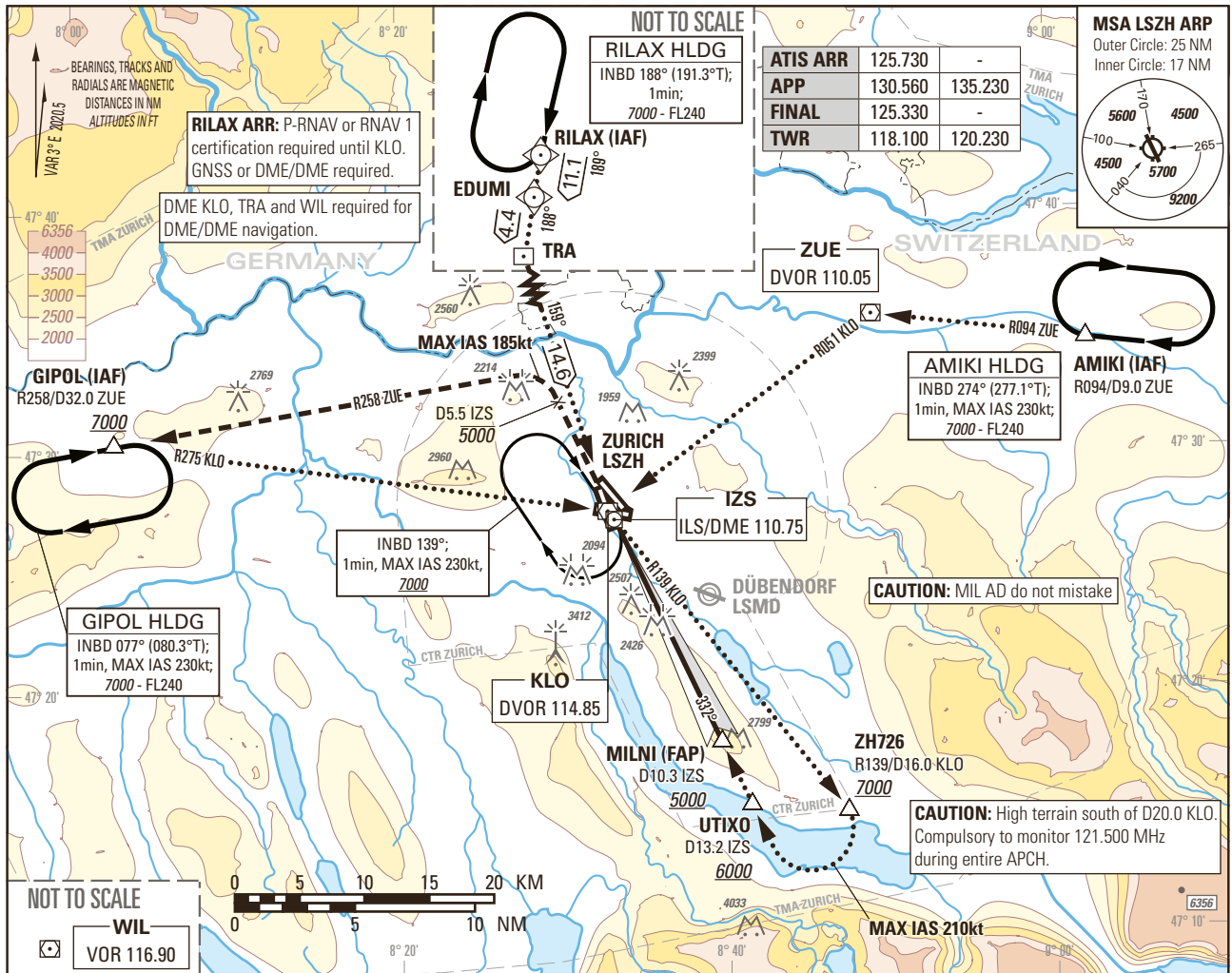


Instrument Approach Chart  
(IAC) - ICAO

AD ELEV 1417ft

TRANSITION LEVEL by ATC  
TRANSITION ALTITUDE 7000

ZURICH LSZH  
ILS RWY 34



Missed APCH climb gradient requirement	STRAIGHT-IN APPROACH					ROD	GS kt	90	110	130	150	
	A	B	C	D	D <sub>L</sub>		FT/MIN	526	642	759	876	
		OBSTACLE CLEARANCE ALTITUDE (HEIGHT)					CAUTION Nuisance GPWS glideslope warning may be expected below 100ft THR.					
2.5%	pressure altimeter	1555 (167)	1564 (176)	1574 (186)	1585 (197)							
		DECISION ALTITUDE (HEIGHT)										
2.5%	pressure altimeter	1588 (200)										

IZS DME	2	3	4	5	6	7	8	9	10	11	12	13
RECOMMENDED CROSSING ALTITUDE (HEIGHT)	2090 (710)	2440 (1060)	2790 (1410)	3140 (1760)	3490 (2110)	3840 (2460)	4190 (2810)	4540 (3160)	4890 (3510)	5240 (3860)	5590 (4210)	5940 (4560)

COR: Completely revised (WEF02DEC2021)

THIS PAGE INTENTIONALLY LEFT BLANK