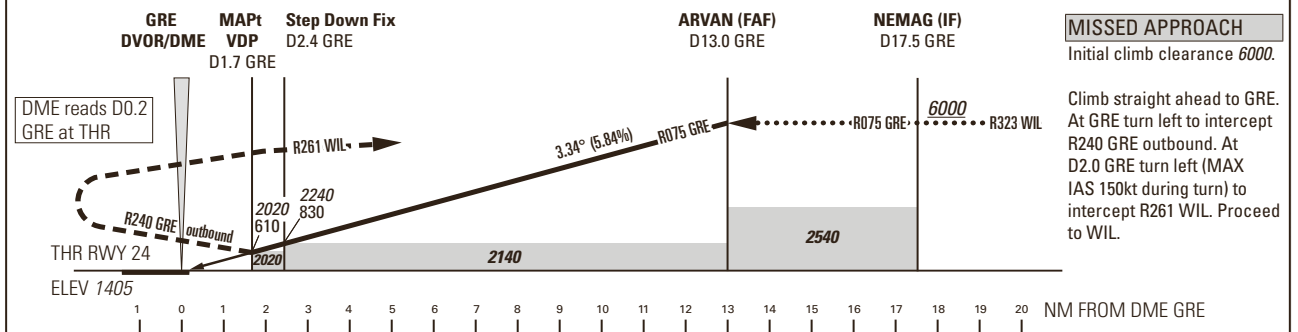
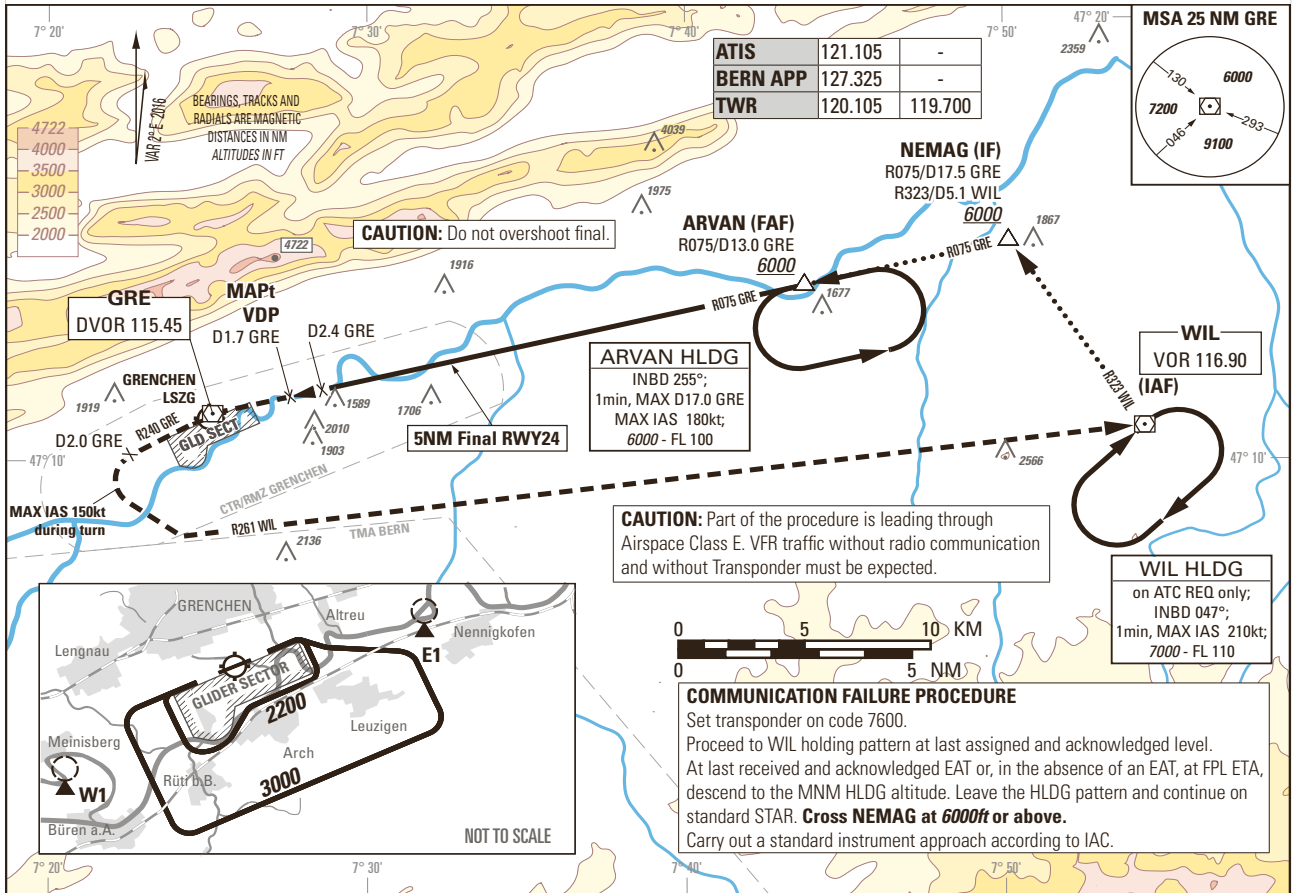


Instrument Approach Chart
(IAC) - ICAO

AD ELEV 1411ft

TRANSITION LEVEL by ATC
TRANSITION ALTITUDE 6000

GRENCHEN LSZG
VOR RWY 24
ACFT CAT A / B



Missed APCH climb gradient requirement	STRAIGHT-IN APPROACH ¹⁾	
	OCA(H)	
	A	B
2.5%	2020 (610)	

ROD	GS kt	90	110	130	150
	FT/MIN	533	651	769	888

CIRCLING ^{2) 3)}	A	B	
	OCA	2270	2320
	VIS	1900 m	2800 m

NOTE

- ¹⁾ Noise abatement:
 - do not turn onto final before reaching D 1.2 GRE
- ²⁾ Circling:
 - No circlings north of RWY 06/24
 - avoid overflying villages
 - whenever possible, circling ALT 3000ft on outer downwind
 - circling shall remain inside CTR limits

CAUTION

- Visual Segment Surface (VSS) penetrated by terrain right of track up to 1560ft.
- Glider sector.

COR: FREQ, CTR/RMZ (WEF 02JAN2020)

THIS PAGE INTENTIONALLY LEFT BLANK