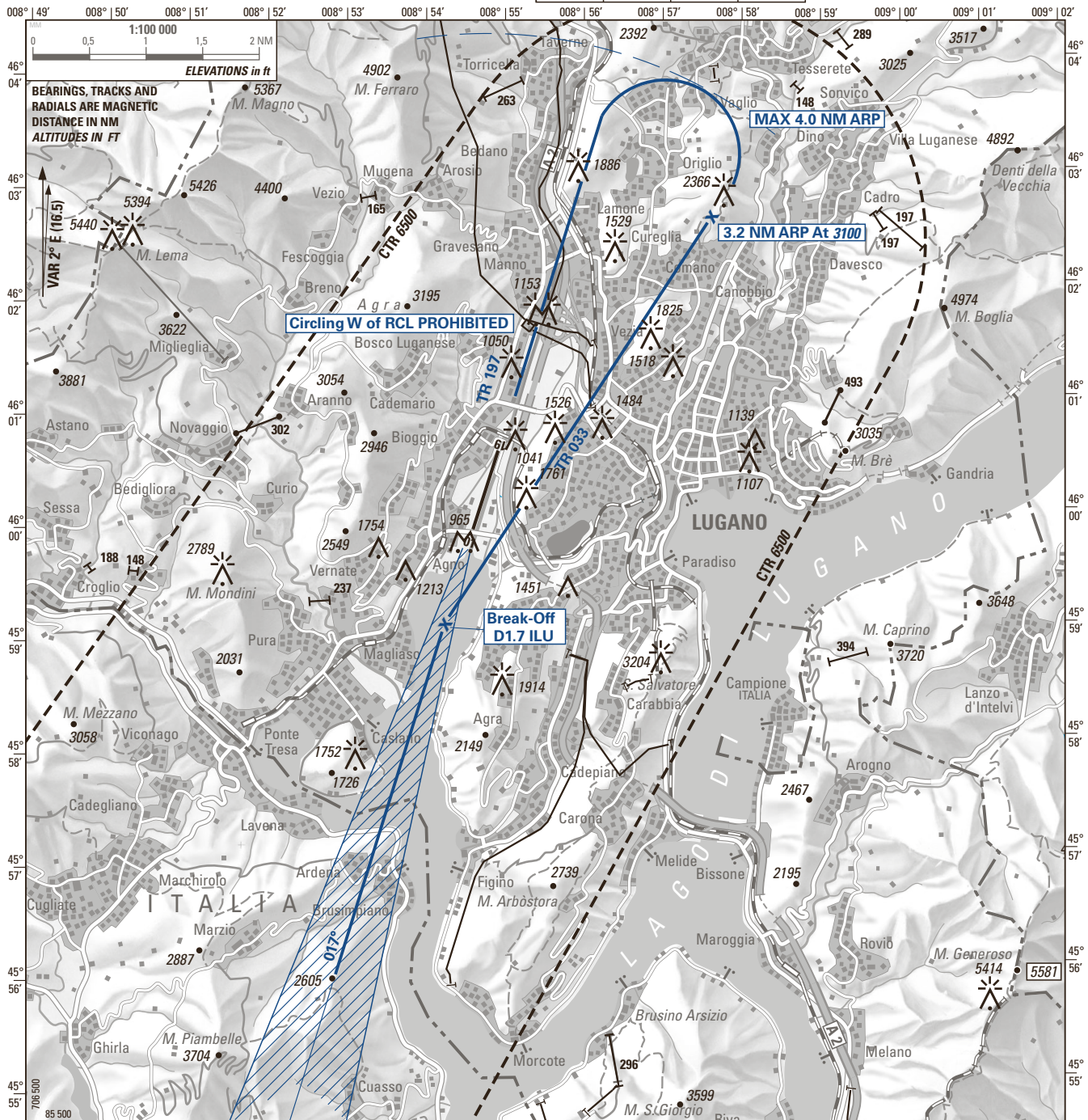


CIRCLING APPROACH CHART

ELEV 915 ft (279 m)

ATIS	121.175		
TWR	120.250	119.700	121.500
CLR DEL	121.780		

LUGANO DAY ONLY
CIRCLING FOXTROT
RWY 19



WARNING: Disregard PAPI RWY 01 information.
Use PAPI RWY 19 information only within 2 NM from THR

Descent to be arranged to maintain clean configuration as long as possible, safety and ATC requirement considered.

OBST ELEV: ft / HGT: ft

OCA/H CIRCLING	VIS m	CEILING REQUIRED
A & B		
3100 (2185)	Day only 5000	3100 ft AAL or higher
3500 (2585) if ceiling and VIS permit		

CIRCLING PROCEDURE

If visual contact is established at D2.2 ILU, continue straight ahead. At D1.7 ILU turn right on track 033°, if ceiling and visibility permit maintain 3500 ft for noise abatement purposes (3100 ft procedure MNM) until 3.2 NM ARP.

At 3.2 NM ARP start left turn onto base.

COR: FREQ withdrawn, OBST (WEF 30JAN2020)

© 2020 Swisstopo. CH-3084 Wabern

THIS PAGE INTENTIONALLY LEFT BLANK