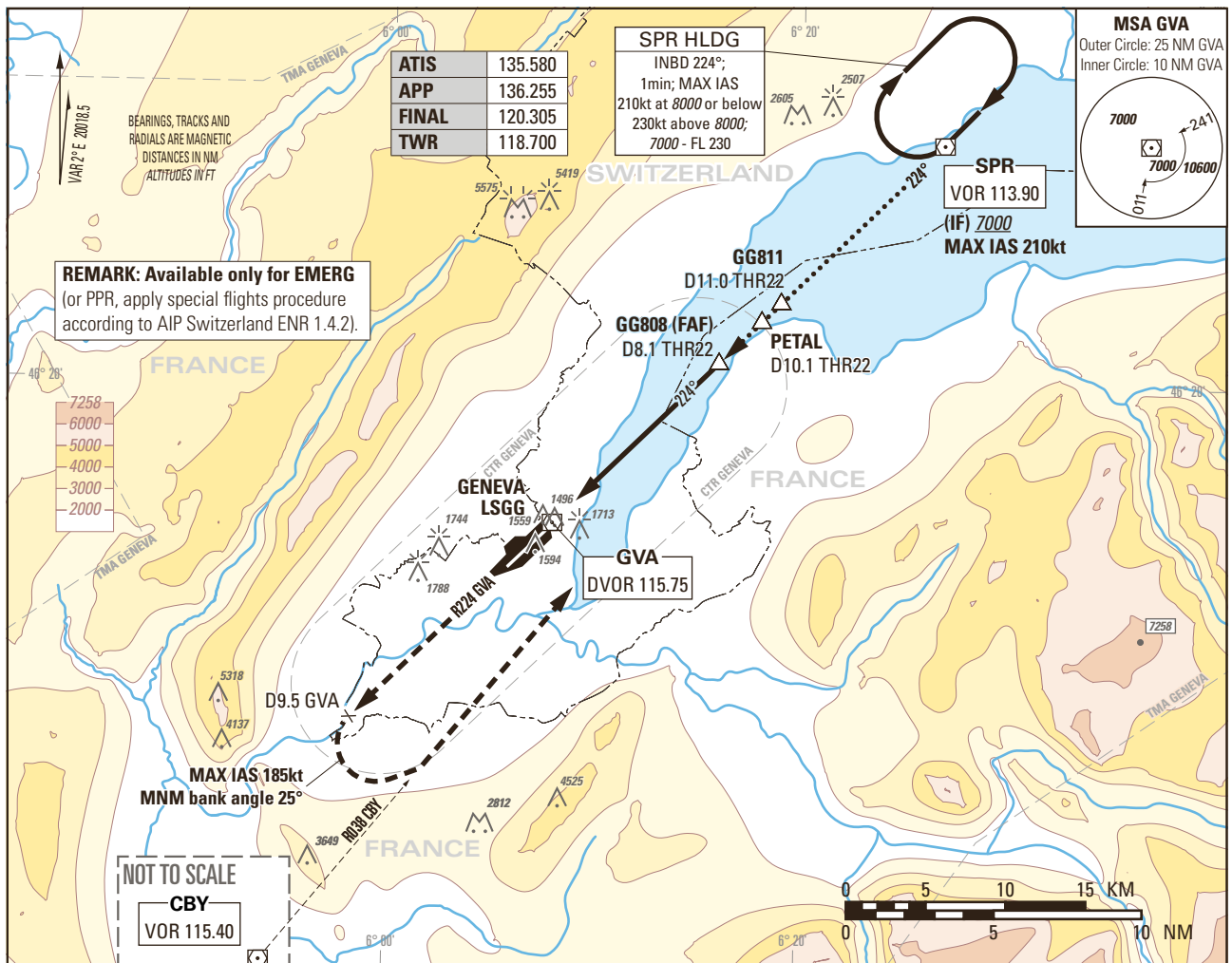


Instrument Approach Chart
(IAC) - ICAO

AD ELEV 1411ft

TRANSITION LEVEL by ATC
TRANSITION ALTITUDE 7000

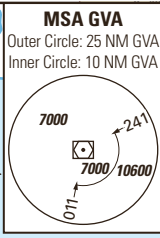
GENEVA LSGG
SRA RWY 22



ATIS	135.580
APP	136.255
FINAL	120.305
TWR	118.700

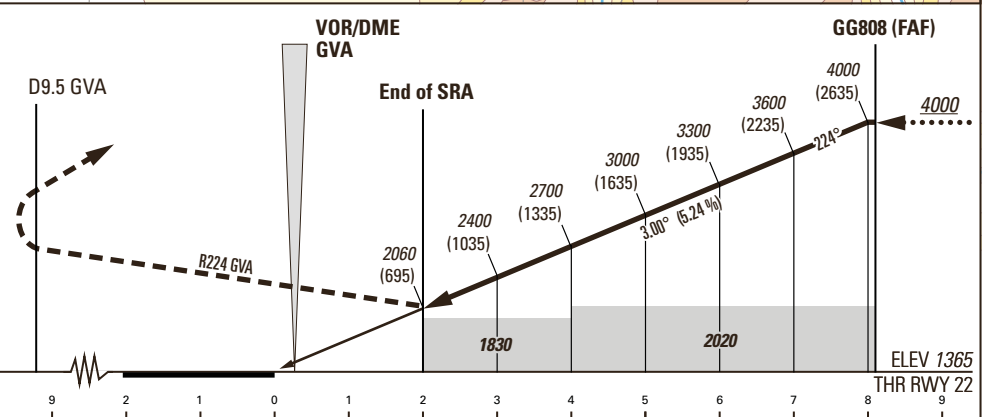
REMARK: Available only for EMERG
(or PPR, apply special flights procedure according to AIP Switzerland ENR 1.4.2).

SPR HLDG
INBD 224°;
1min; MAX IAS
210kt at 8000 or below
230kt above 8000;
7000 - FL 230



MISSED APPROACH

Initial climb clearance 7000.
Climb straight ahead on RWY axis. Follow R224 GVA. At D9.5 GVA past the station, turn left to intercept R038 CBY (MAX IAS 185kt, MNM bank angle 25°). Proceed to SPR.



OBSTACLE CLEARANCE ALTITUDE (HEIGHT)				
	A	B	C	D
Surveillance Radar Approach	2060 (695)			
Circling ¹⁾²⁾	2100 (689)		2400 (989)	

ROD	GS kt	90	110	130	150
	FT/MIN	478	584	690	796

RADAR FIX	2	3	4	5	6	7	8
recommended crossing ALTITUDE (HEIGHT)	2060 (695)	2400 (1035)	2700 (1335)	3000 (1635)	3300 (1935)	3600 (2235)	4000 (2635)

CAUTION
0.8 NM before THR22 Visual Segment Surface (VSS) penetrated by power lines and trees up to 1532ft AMSL.

NOTE
¹⁾ Above aerodrome ELEV 1411ft, circling on request of ATC under special conditions and north of RWY only, speed and radius for category D as for category C aircraft.
²⁾ Circling must remain inside CTR at all times.

COR:MSA (WEF 28MAR2019)

THIS PAGE INTENTIONALLY LEFT BLANK