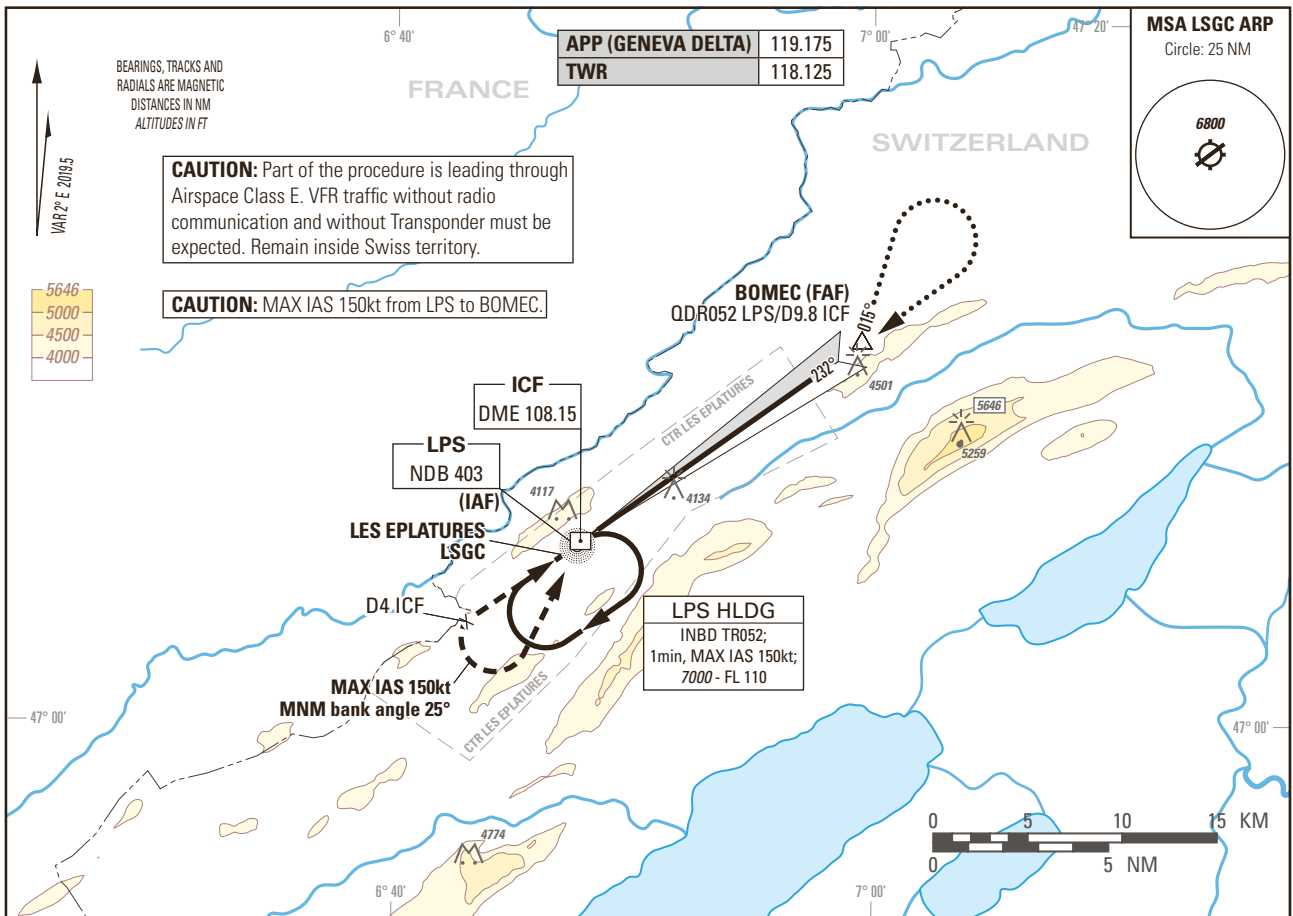


Instrument Approach Chart  
(IAC) - ICAO

ELEV 3368ft

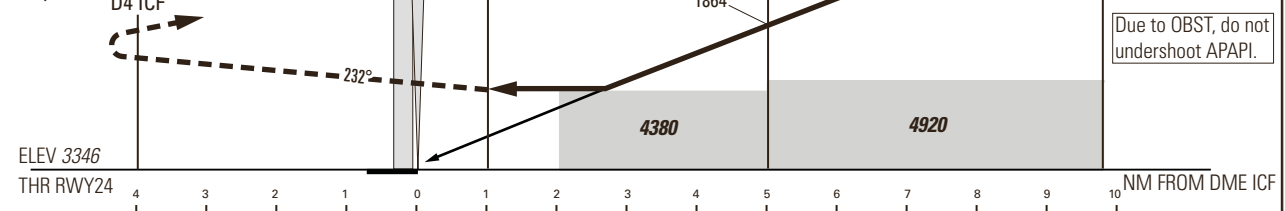
TRANSITION LEVEL by ATC  
TRANSITION ALTITUDE 7000

LES EPLATURES LSGC  
LOC RWY 24  
ACFT CAT A/B



**MISSED APPROACH**

Initial climb clearance 7000.  
Climb straight ahead. At D4 ICF turn left (MAX IAS 150kt during turn, MNM bank angle 25° to remain inside controlled airspace) to LPS NDB and hold. MNM climb gradient 4.4% to 7000 to remain inside controlled airspace.



Missed APCH climb gradient requirement	OBSTACLE CLEARANCE ALTITUDE (HEIGHT) / OCA (HEIGHT)		VIS m
	STRAIGHT-IN APPROACH		
	A	B <sup>2)</sup>	
2.5%	4380 (1034)		4500
Circling <sup>1)</sup>	4640 (1272)	5010 (1642)	5000

ROD	GS kt	90	110	130	150
	FT/MIN	558	682	806	930

DME ICF DIST	1	2	3	4	5	6	7	8	9
recommended CROSSING ALT	3720	4090	4460	4840	5210	5580	5950	6320	6690
recommended CROSSING ALT	374	744	1114	1494	1864	2234	2604	2974	3344

**REMARK**  
AIRAC date MAR - OCT 31: Intense GLD ACT within APCH Sector and ATS Routes. No IFR APCH when DME u/s.

**CAUTION**  
Gliders parked near RWY edge.  
0.7NM BFR THR 24 Visual Segment Surface (VSS) penetrated by trees, terrain and OBST up to 3516ft AMSL.

**NOTE**  
<sup>1)</sup> Circling shall remain within CTR limits  
<sup>2)</sup> Higher CAT of ACFT may use the same PROC if they comply with the CAT B restrictions.

COR: Missed APCH text (WEF 22APR2021)

THIS PAGE INTENTIONALLY LEFT BLANK