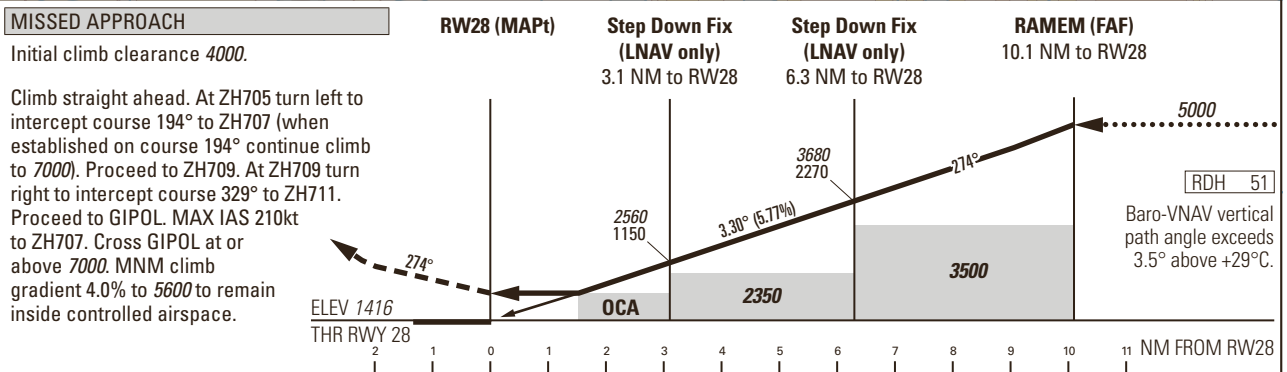
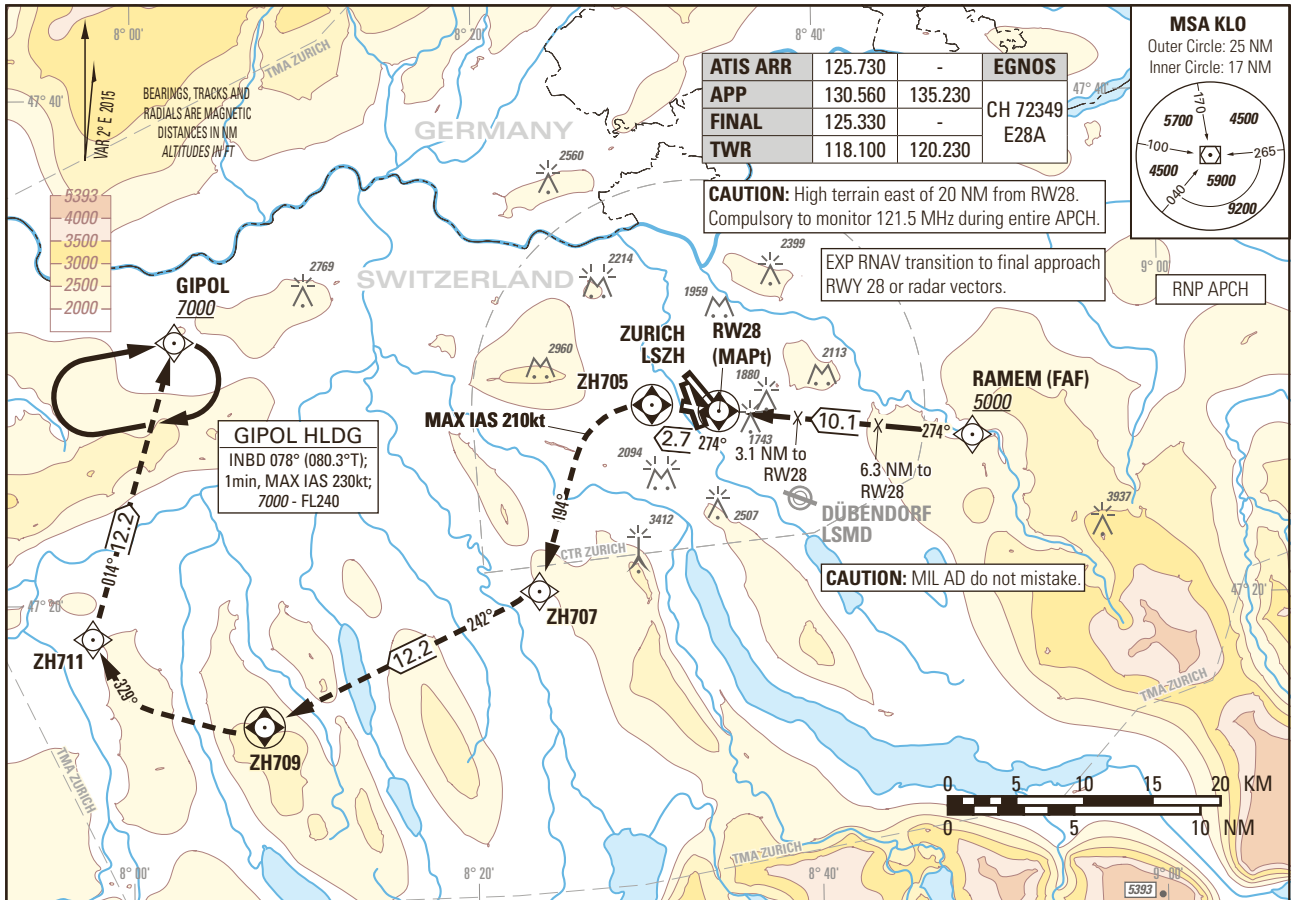


Instrument Approach Chart
(IAC) - ICAO

AD ELEV 1417ft

TRANSITION LEVEL by ATC
TRANSITION ALTITUDE 7000

ZURICH LSZH
RNP RWY 28



COR: APP FREQ (WEF 22APR2021)

Input data

Operation Type	0
SBAS Provider	1
Airport Identifier	LSZH
Runway	28
Runway Direction	0
Approach Performance Designator	0
Route Indicator	
Reference Path Data Selector	0
Reference Path Identifier	E28A
LTP/FTP Latitude	472723.7555N
LTP/FTP Longitude	0083413.6295E
LTP/FTP Ellipsoidal Height (metres)	478.8
FPAP Latitude	472732.5515N
Delta FPAP Latitude (seconds)	8.7960
FPAP Longitude	0083209.7575E
Delta FPAP Longitude (seconds)	-123.8720
Threshold Crossing Height	51.0
TCH Units Selector	0
Glidepath Angle (degrees)	3.30
Course Width (metres)	105.00
Length Offset (metres)	112
HAL (metres)	40.0
VAL (metres)	50.0

Output data

Data Block	10 08 1A 13 0C 1C 00 00 01 38 32 05 D7 BC 5D 14 FB 93 AD 03 B4 26 B8 44 00 40 38 FC FE 01 4A 01 64 0E C8 FA C6 A9 DC FB
Calculated CRC Value	C6A9DCFB

Required Additional Data

ICAO Code	LS
LTP/FTP Orthometric Height (metres)	431.6
FPAP Orthometric Height (metres)	431.6