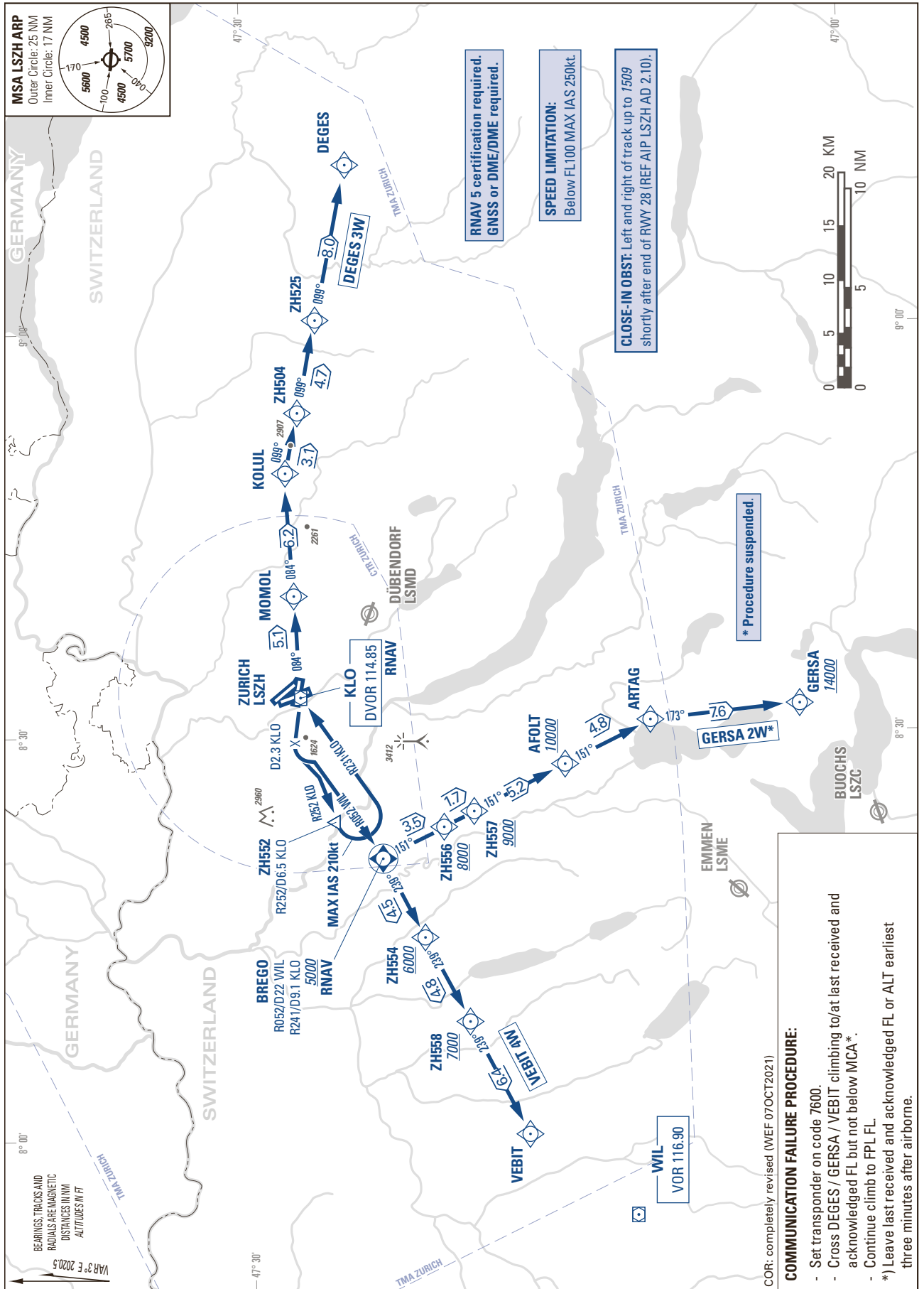


STANDARD INSTRUMENT DEPARTURE CHART
(SID) - ICAO

TRANSITION LEVEL by ATC
TRANSITION ALTITUDE 7000

ZURICH - LSZH
SID RWY 28 - RNAV 5



COR: completely revised (WVEF 07OCT2021)

COMMUNICATION FAILURE PROCEDURE:

- Set transponder on code 7600.
- Cross DEGES / GERSA / VEBIT climbing to/at last received and acknowledged FL but not below MCA*.
- Continue climb to FPL FL.
- *) Leave last received and acknowledged FL or ALT earliest three minutes after airborne.

THIS PAGE INTENTIONALLY LEFT BLANK