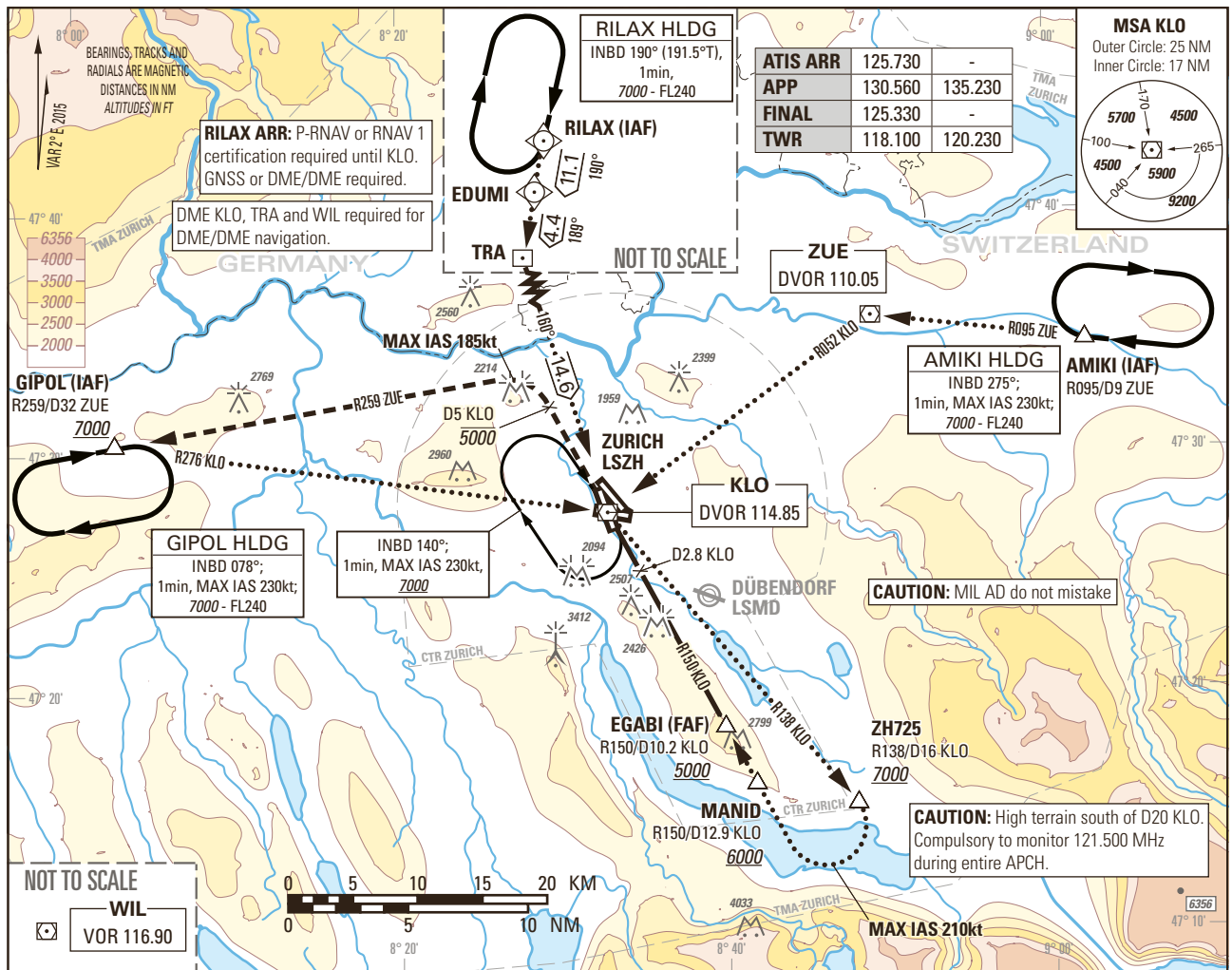


Instrument Approach Chart
(IAC) - ICAO

AD ELEV 1417ft

TRANSITION LEVEL by ATC
TRANSITION ALTITUDE 7000

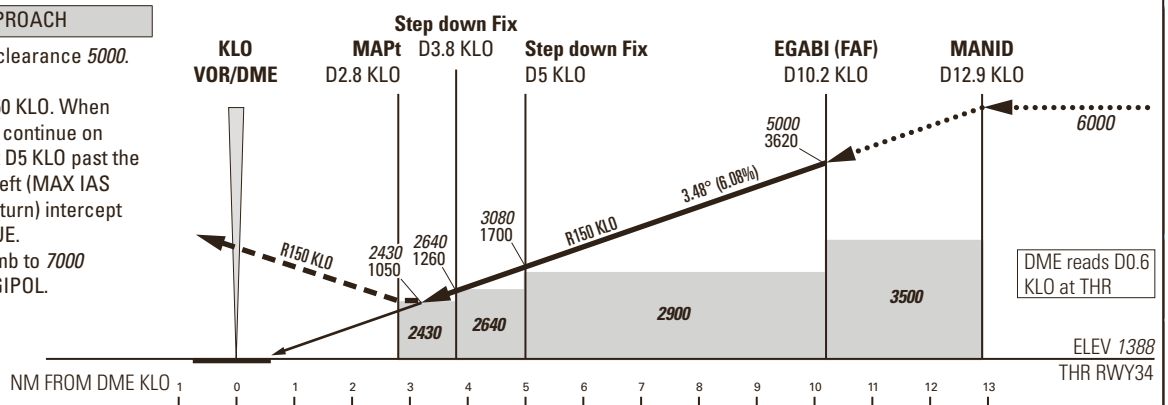
ZURICH LSZH
VOR RWY 34



MISSED APPROACH

Initial climb clearance 5000.

Climb on R150 KLO. When passing KLO continue on R330 KLO. At D5 KLO past the station turn left (MAX IAS 185kt during turn) intercept R259 from ZUE. Continue climb to 7000 Proceed to GIPOL.



OBSTACLE CLEARANCE ALTITUDE (HEIGHT)	A	B	C	D
STRAIGHT-IN APPROACH	2430 (1050)			

ROD	GS kt	90	110	130	150
	FT/MIN	554	677	800	924

DME KLO	4	5	6	7	8	9	10	11	12
RECOMMENDED CROSSING ALTITUDE (HEIGHT)	2710 (1330)	3080 (1700)	3450 (2070)	3820 (2440)	4190 (2810)	4560 (3180)	4930 (3550)	5300 (3920)	5670 (4290)

CAUTION
- 0.6NM BFR THR34 visual segment surface (VSS) penetrated by building up to 1550ft AMSL.

COR: APP FREQ (WEF 22APR2021)

THIS PAGE INTENTIONALLY LEFT BLANK