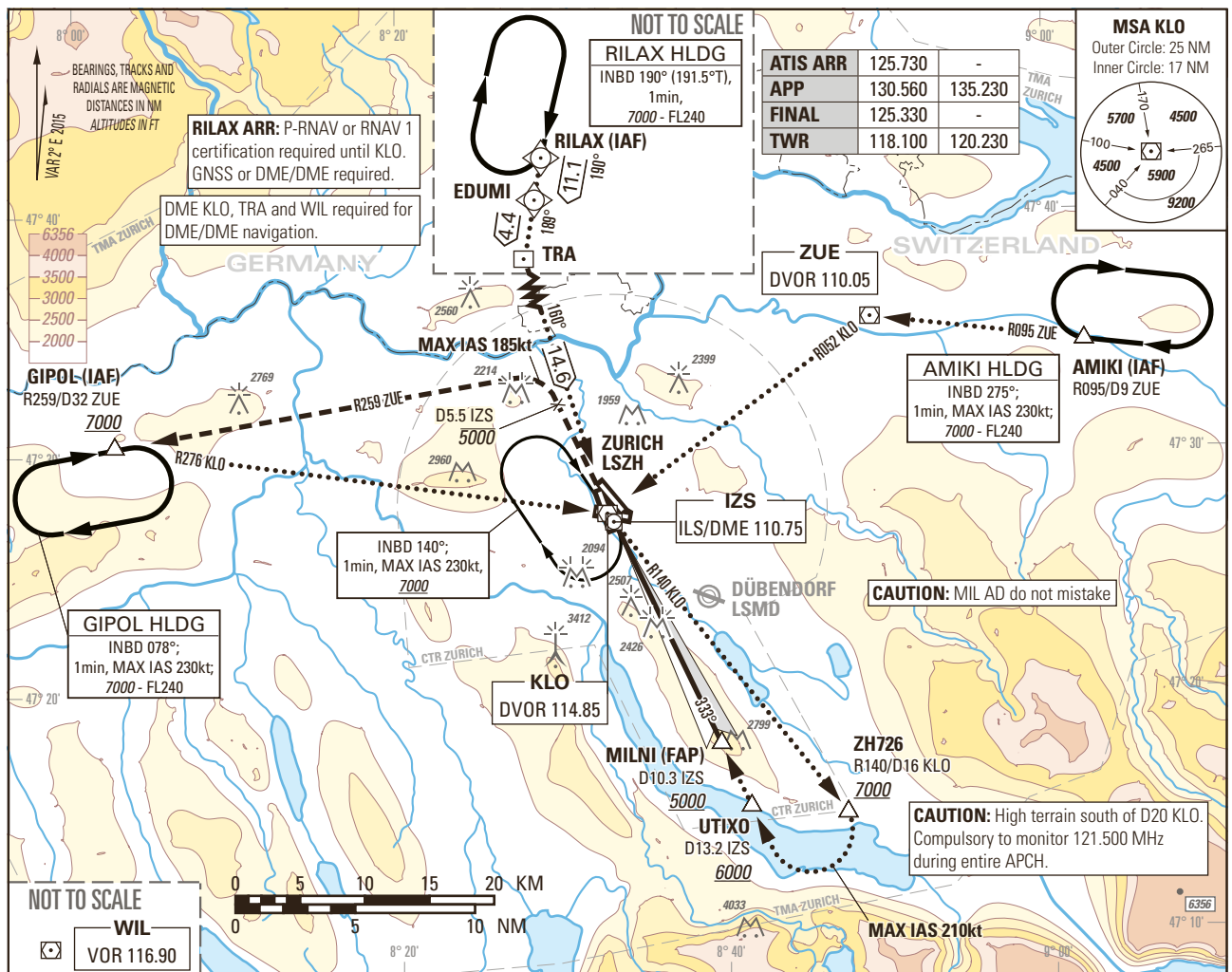


Instrument Approach Chart
(IAC) - ICAO

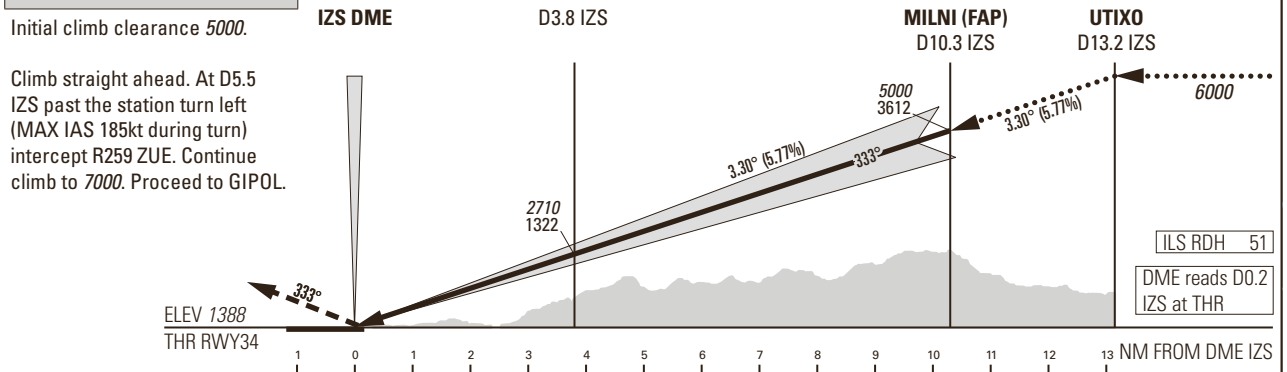
AD ELEV 1417ft

TRANSITION LEVEL by ATC
TRANSITION ALTITUDE 7000

ZURICH LSZH
ILS RWY 34



MISSED APPROACH



Missed APCH climb gradient requirement	STRAIGHT-IN APPROACH					ROD	GS kt	90	110	130	150		
	A	B	C	D	D _L							FT/MIN	526
OBSTACLE CLEARANCE ALTITUDE (HEIGHT)													
2.5%	pressure altimeter	1591 (203)	1601 (213)	1614 (226)	1624 (236)	CAUTION							
3.0% to 2400	altimeter	1537 (149)	1546 (158)	1555 (167)	1567 (179)	Nuisance GPWS glideslope warning may be expected below 100ft THR.							
DECISION ALTITUDE (HEIGHT)													
2.5%	pressure altimeter	1591 (203)	1601 (213)	1614 (226)	1624 (236)								
3.0% to 2400	altimeter	1588 (200)											
IZS DME		2	3	4	5	6	7	8	9	10	11	12	13
RECOMMENDED CROSSING ALTITUDE (HEIGHT)		2080 (700)	2430 (1050)	2780 (1400)	3130 (1750)	3480 (2100)	3830 (2450)	4180 (2800)	4530 (3150)	4880 (3500)	5230 (3850)	5580 (4200)	5930 (4550)

COR: APP FERRO (WEP22APR2021)

THIS PAGE INTENTIONALLY LEFT BLANK