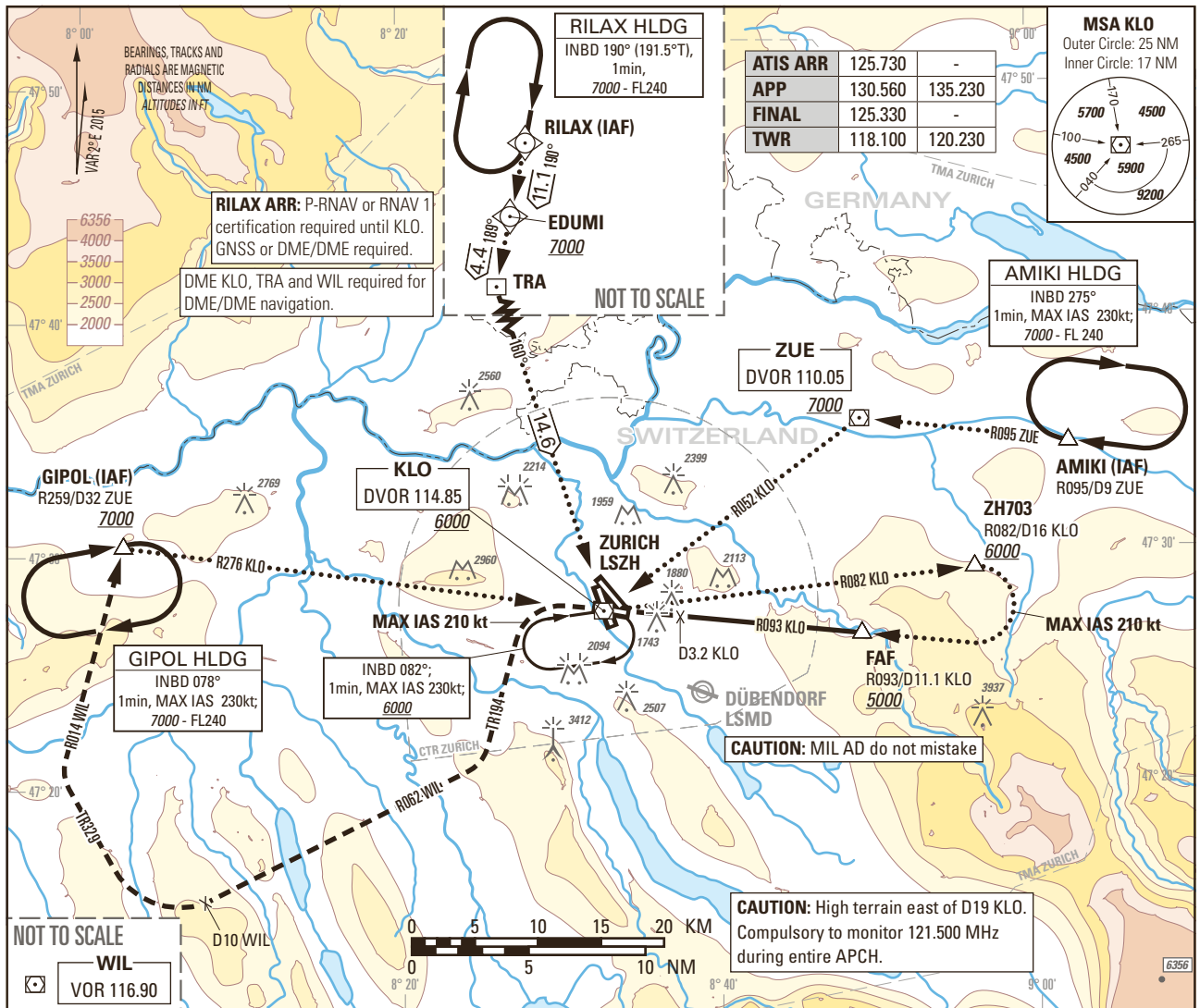


Instrument Approach Chart
(IAC) - ICAO

AD ELEV 1417ft

TRANSITION LEVEL by ATC
TRANSITION ALTITUDE 7000

ZURICH LSZH
VOR RWY 28



MISSED APPROACH

Initial climb clearance 4000.

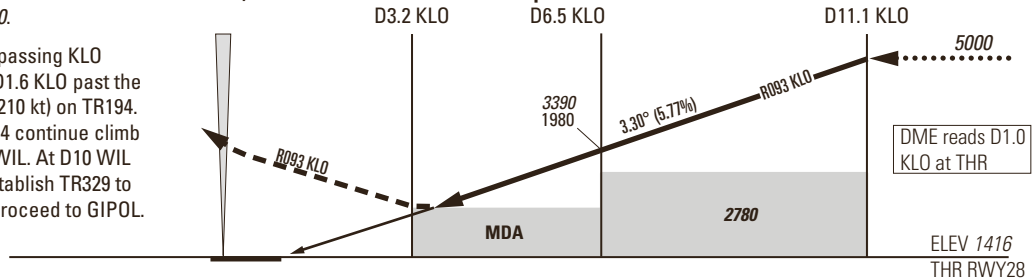
Climb on R093 KLO. When passing KLO continue on R273 KLO. At D1.6 KLO past the station turn left (MAX IAS 210 kt) on TR194. When established on TR194 continue climb to 7000. Intercept R062 to WIL. At D10 WIL to the station turn right. Establish TR329 to intercept R014 from WIL. Proceed to GIPOL.

KLO VOR/DME

MAPt

Step Down Fix

FAF



NM FROM DME KLO 2 1 0 1 2 3 4 5 6 7 8 9 10 11 12

Missed APCH climb gradient requirement	STRAIGHT-IN APPROACH				DME KLO	RECOMMENDED CROSSING ALTITUDE (HEIGHT)	ROD	GS kt	FT/MIN	90	110	130	150
	A	B	C	D									
	OBSTACLE CLEARANCE ALTITUDE (HEIGHT)												
2.5%	2370 (960)												
	MINIMUM DESCENT ALTITUDE (HEIGHT)												
2.5%	3070 (1660)												
4.0% up to 4600	2370 (960)												

CAUTION

- Do not confuse RWY 32 with RWY 28. Bright floodlight slightly N of APCH at D1.5 KLO.
- Expect turbulences on short final during south-westerly winds.
- 2.0NM BFR THR28 visual segment surface (VSS) penetrated by hills up to 1976ft AMSL.

REMARK

- Obstacle limitation and restriction according to non-instrument RWY criteria.

COR: APP FREQ (WEF 22APR2021)

THIS PAGE INTENTIONALLY LEFT BLANK