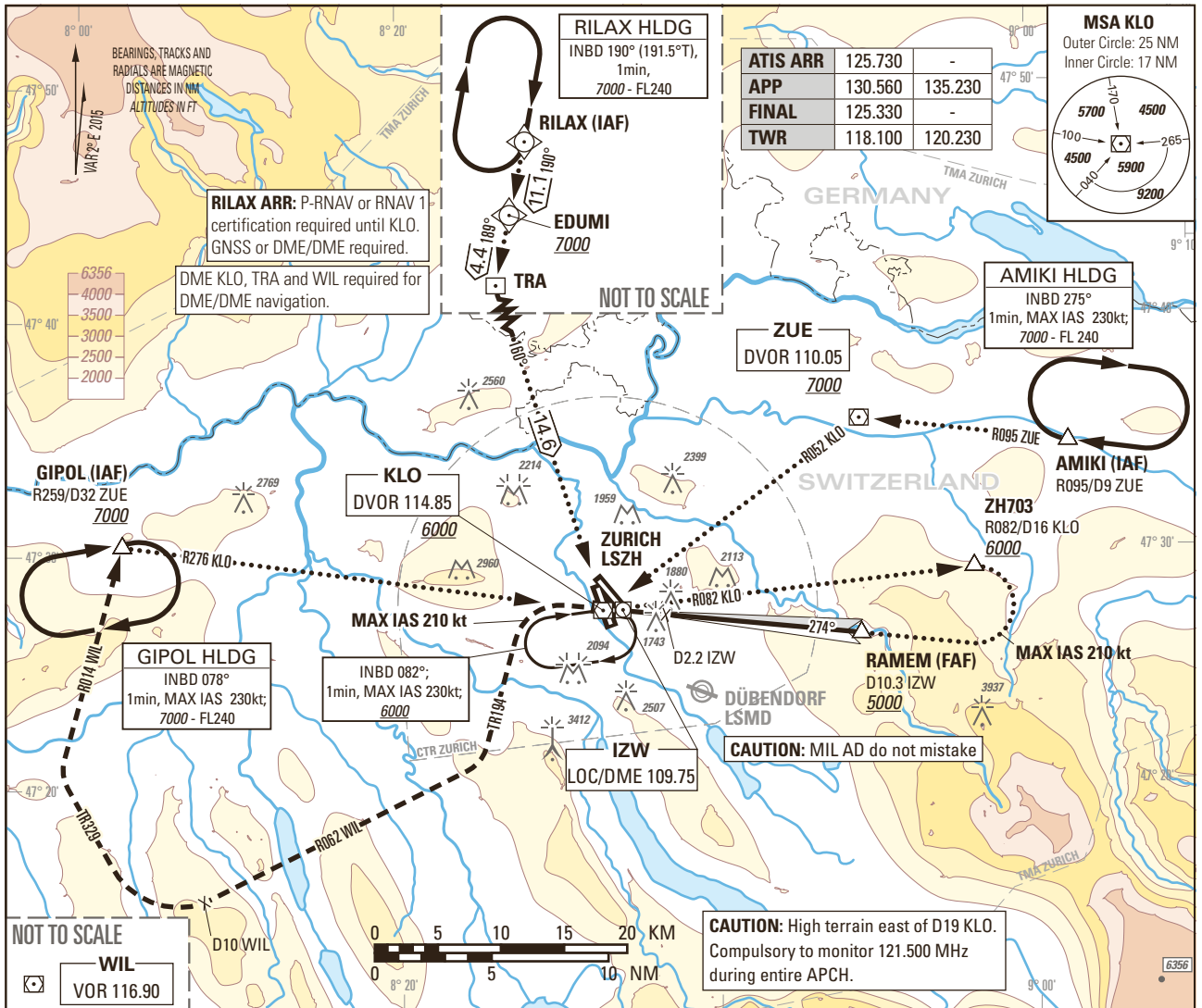


Instrument Approach Chart
(IAC) - ICAO

AD ELEV 1417ft

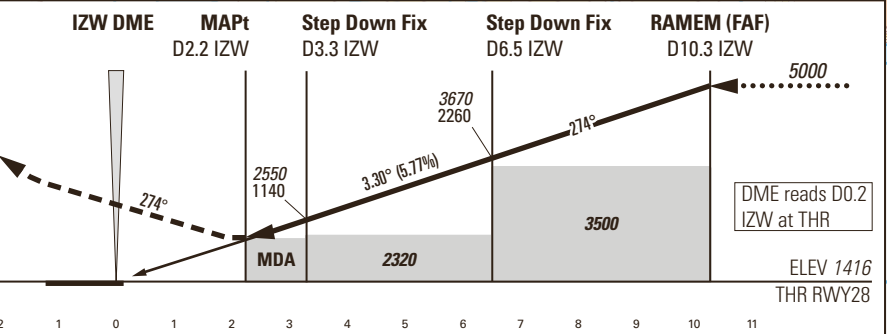
TRANSITION LEVEL by ATC
TRANSITION ALTITUDE 7000

ZURICH LSZH
LOC RWY 28



MISSED APPROACH

Initial climb clearance 4000.
Climb straight ahead. At D2.5 IZW past the station, turn left (MAX IAS 210 kt) on TR194. When established on TR194 continue climb to 7000. Intercept R062 to WIL. At D10 WIL to the station turn right. Establish TR329 to intercept R014 from WIL. Proceed to GIPOL.



Missed APCH climb gradient requirement	STRAIGHT-IN APPROACH			
	A	B	C	D
	OBSTACLE CLEARANCE ALTITUDE (HEIGHT)			
2.5%	2300 (890)			
3.0% to 2500	2290 (880)			
	MINIMUM DESCENT ALTITUDE (HEIGHT)			
2.5%	3070 (1660)			
3.9% to 4900	2290 (880)			

DME IZW	3	4	5	6	7	8	9	10
RECOMMENDED CROSSING ALTITUDE (HEIGHT)	2450 (1040)	2800 (1390)	3150 (1740)	3500 (2090)	3850 (2440)	4200 (2790)	4550 (3140)	4900 (3490)
ROD	GS kt		90	110	130	150		
	FT/MIN		526	642	759	876		

CAUTION
- Do not confuse RWY32 with RWY28. Bright floodlight slightly N of APCH at D0.7 IZW.
- Expect turbulences on short final during south-westerly winds.
- 0.4NM BFR THR28 visual segment surface (VSS) penetrated by trees up to 1533ft AMSL.

REMARK
- Obstacle limitation and restriction according to non-instrument RWY criteria.
- LOC28 signal fulfils ICAO Annex 10.

COR: APP FREQ (WEF 22APR2021)

THIS PAGE INTENTIONALLY LEFT BLANK