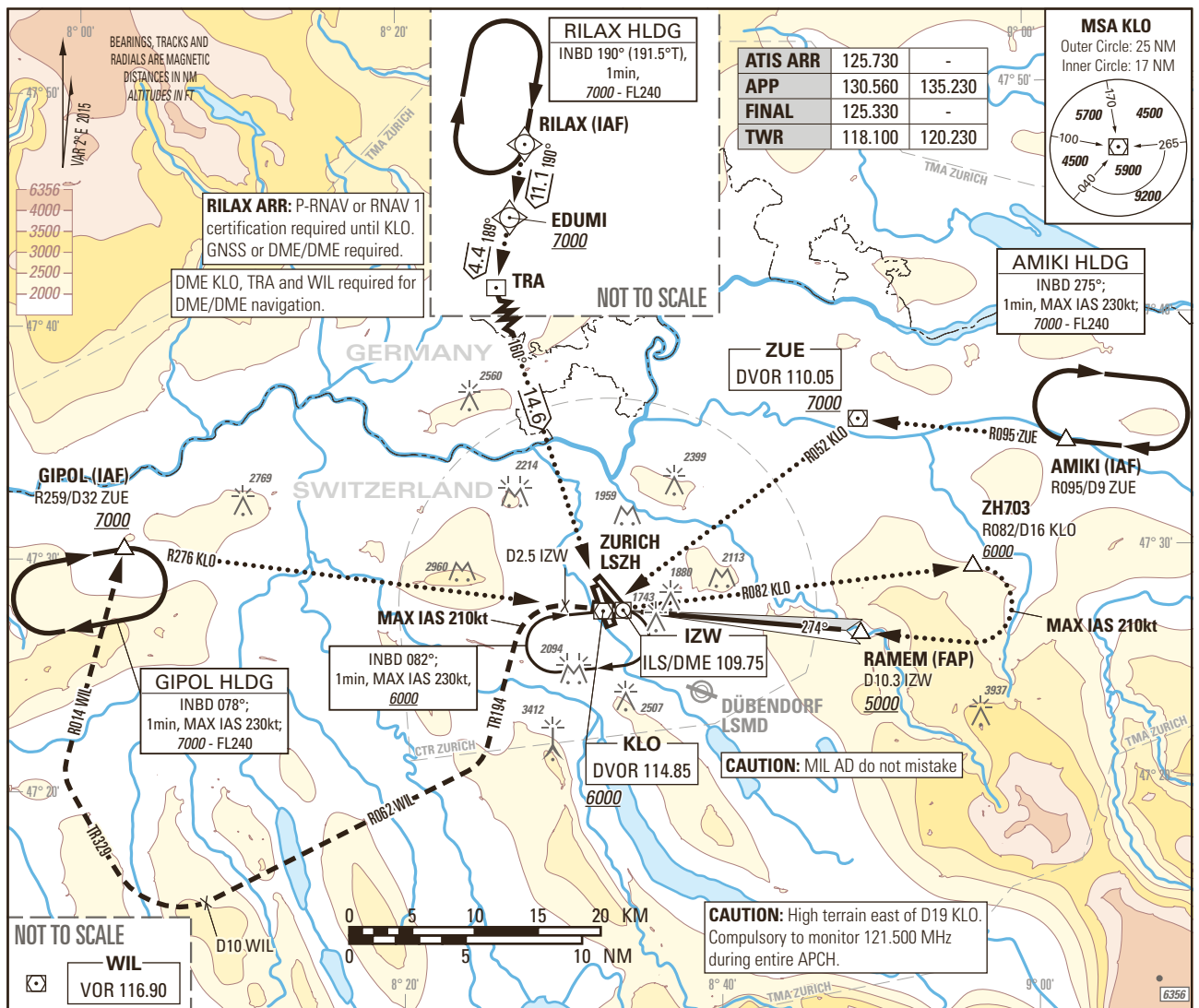


Instrument Approach Chart
(IAC) - ICAO

AD ELEV 1417ft

TRANSITION LEVEL by ATC
TRANSITION ALTITUDE 7000

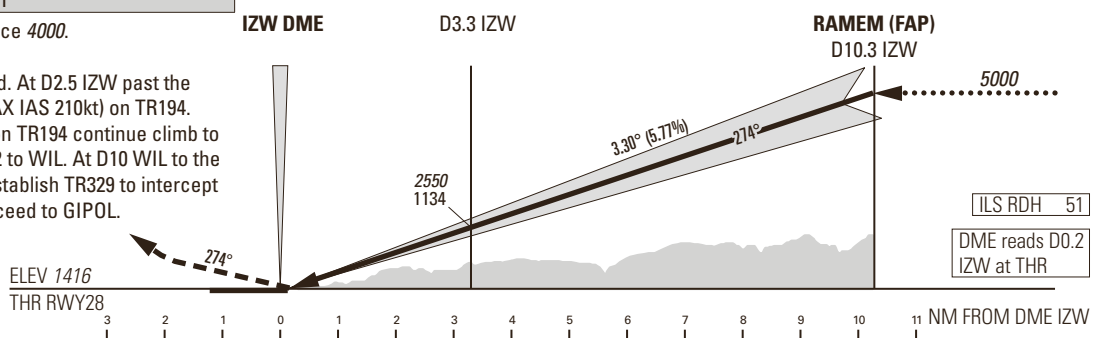
ZURICH LSZH
ILS RWY 28



MISSED APPROACH

Initial climb clearance 4000.

Climb straight ahead. At D2.5 IZW past the station turn left (MAX IAS 210kt) on TR194. When established on TR194 continue climb to 7000. Intercept R062 to WIL. At D10 WIL to the station turn right. Establish TR329 to intercept R014 from WIL. Proceed to GIPOL.



Missed APCH climb gradient requirement	STRAIGHT-IN APPROACH				
	A	B	C	D	D _L
OBSTACLE CLEARANCE ALTITUDE (HEIGHT)					
2.5%	pressure altimeter	2293 (877)	2304 (888)	2314 (898)	2325 (909)
4.0% to 3600	pressure altimeter	2061 (645)	2071 (655)	2084 (668)	2094 (678)
DECISION ALTITUDE (HEIGHT)					
2.5%	pressure altimeter	2831 (1415)	2842 (1426)	2853 (1437)	2863 (1447)
4.0% to 5200	pressure altimeter	2061 (645)	2071 (655)	2084 (668)	2094 (678)

CAUTION

- Do not confuse RWY 32 with RWY 28.
- Bright floodlight slightly N of APCH at D0.7 IZW.
- Expect turbulences on short final during south-westerly winds.
- Nuisance GPWS glideslope warning may be expected below 100ft THR.
- 0.4NM BFR THR28 visual segment surface (VSS) penetrated by trees up to 1533ft AMSL.

REMARK

- Uncategorised ILS APCH RWY 28 due to obstacle limitation and restriction according to non-instrument RWY criteria.
- ILS 28 signal fulfils ICAO Annex 10, CAT I specifications.

ROD	GS kt	90	110	130	150
	FT/MIN	526	642	759	876

COR: APP FREQ (WEF 22APR2021)

THIS PAGE INTENTIONALLY LEFT BLANK