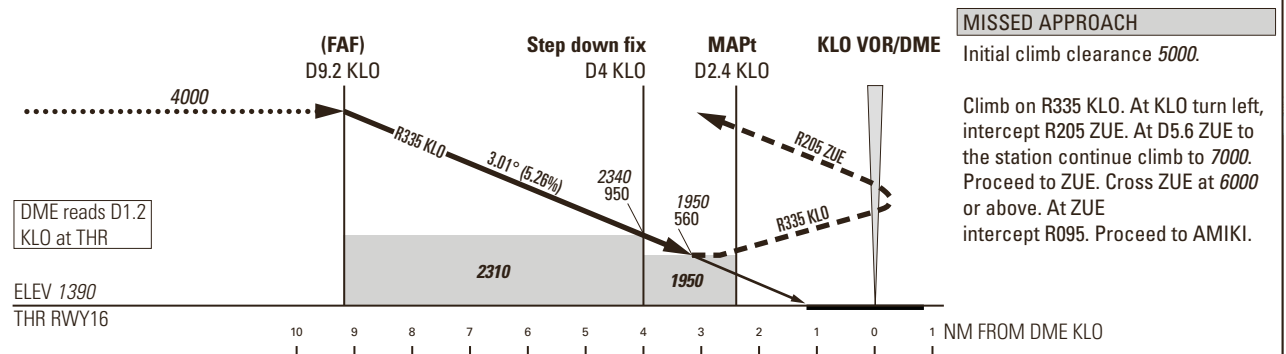
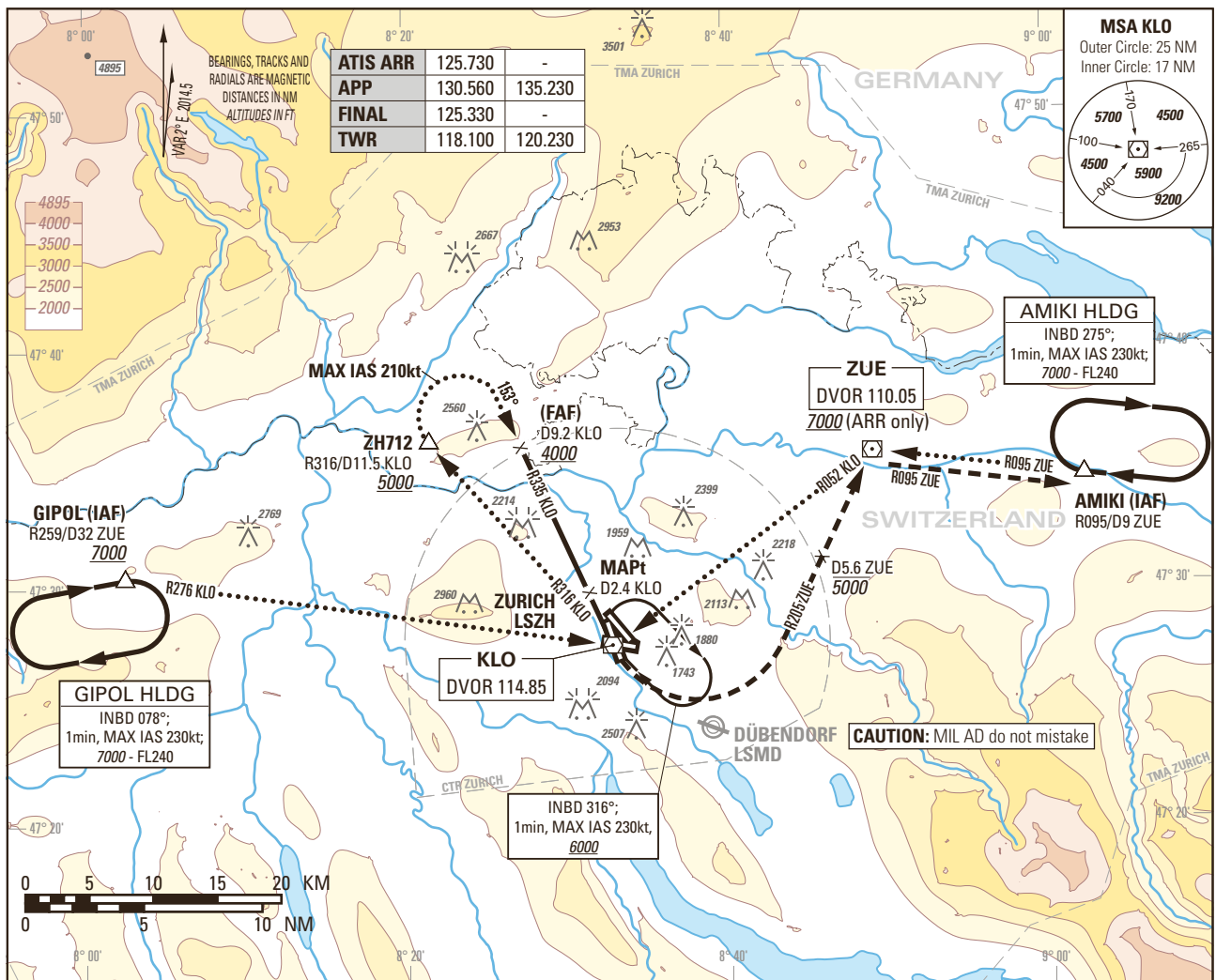


Instrument Approach Chart
(IAC) - ICAO

AD ELEV 1417ft

TRANSITION LEVEL by ATC
TRANSITION ALTITUDE 7000

ZURICH LSZH
VOR RWY 16



DIST DME KLO	9	8	7	6	5	4	3
recommended CROSSING ALT	3940	3620	3300	2980	2660	2340	2020
recommended CROSSING HGT	2550	2230	1910	1590	1270	950	630

ROD	GS kt	90	110	130	150
	FT/MIN	479	586	692	799

NOTE
1) Height above aerodrome ELEV 1417ft, circling prohibited in a sector S of extended RCL 28 and W of extended RCL 14.
2) All circling procedures temporarily suspended.

OBSTACLE CLERANCE ALTITUDE (HEIGHT)	A	B	C	D
STRAIGHT-IN APPROACH	1950 (560)			
CIRCLING ^{1) 2)}	2370 (960)	2470 (1060)	2740 (1330)	2820 (1410)

CAUTION
0.8 NM BFR THR16 Visual Segment Surface (VSS) penetrated by trees up to 1550ft AMSL.

COR: APP FREQ (WEF 22APR2021)

THIS PAGE INTENTIONALLY LEFT BLANK