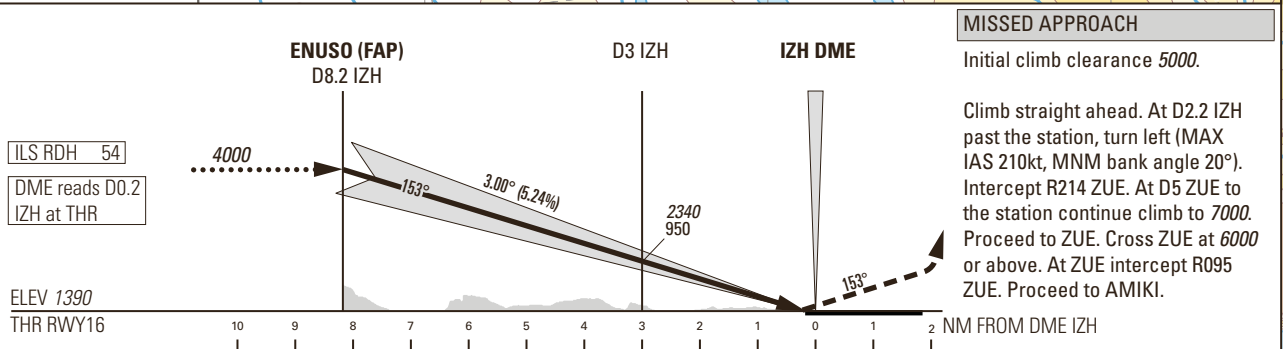
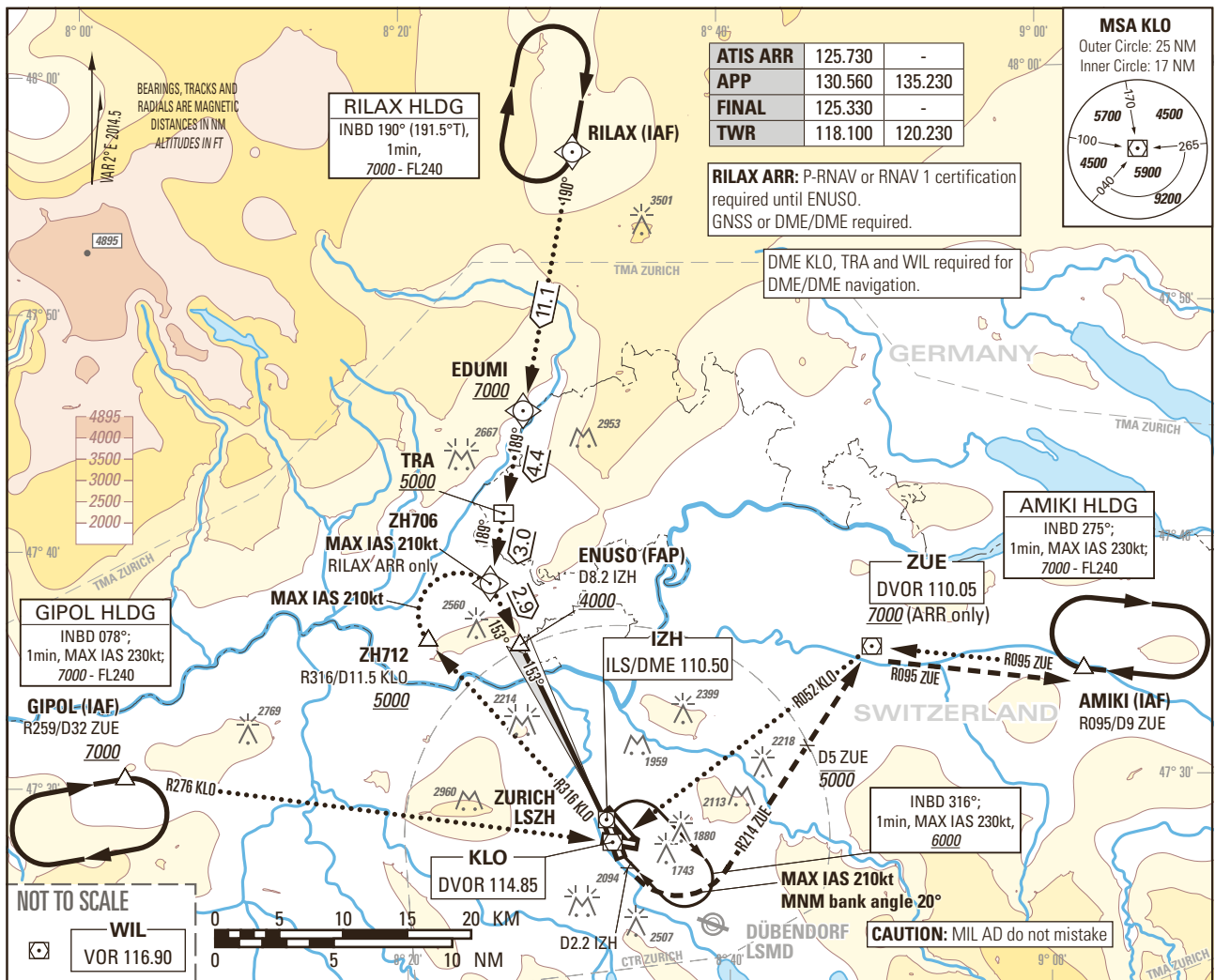


Instrument Approach Chart
(IAC) - ICAO

AD ELEV 1417ft

TRANSITION LEVEL by ATC
TRANSITION ALTITUDE 7000

ZURICH LSZH
ILS RWY 16
CAT II & III



OBSTACLE CLEARANCE ALTITUDE (HEIGHT)						
		M/A climb gradient	A	B	C	D _L
CAT I	pressure altimeter	2.5%	1806 (416)	1816 (426)	1825 (435)	1835 (445)
	pressure altimeter		1544 (154)	1554 (164)	1566 (176)	1582 (192)
CAT II	radio altimeter	5.0% to 2300	1447 (57)	1459 (69)	1473 (83)	1488 (98)
	radio altimeter and autopilot		1444 (54)	1456 (66)	1470 (80)	1485 (95)
DECISION ALTITUDE (HEIGHT) ³⁾						
CAT I	pressure altimeter	2.5%	1806 (416)	1816 (426)	1825 (435)	1835 (445)
CAT I	pressure altimeter	5.0% to 2300	1590 (200)			
CAT II	radio altimeter and autopilot		1490 (100)			

ROD	GS kt	90	110	130	150
	FT/MIN	477	584	690	796
CIRCLING ¹⁾²⁾					
A	B	C	D	D _L	
2370 (960)	2470 (1060)	2740 (1330)	2820 (1410)		

NOTE

¹⁾ Height above aerodrome ELEV 1417ft, circling prohibited in a sector S of extended RCL 28 and W of extended RCL 14.

²⁾ All circling procedures temporarily suspended.

³⁾ Radio altimeter reading at CAT I DH 187ft, at CAT II DH 93ft, for lower minima PPR FOCA.

- Due to GP signal disturbance RWY16, PIC might be REQ by ATC to change APCH Type to LOC or VIS APCH, MET permitting.

COR: APP FREQ (WEF 22APR2021)

THIS PAGE INTENTIONALLY LEFT BLANK