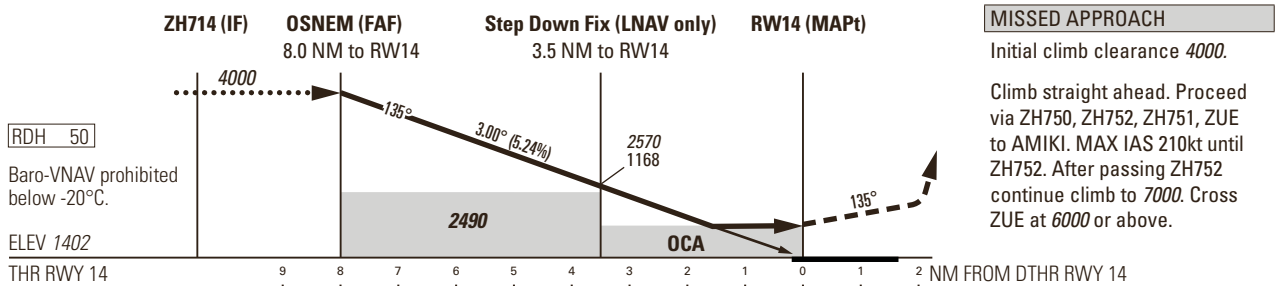
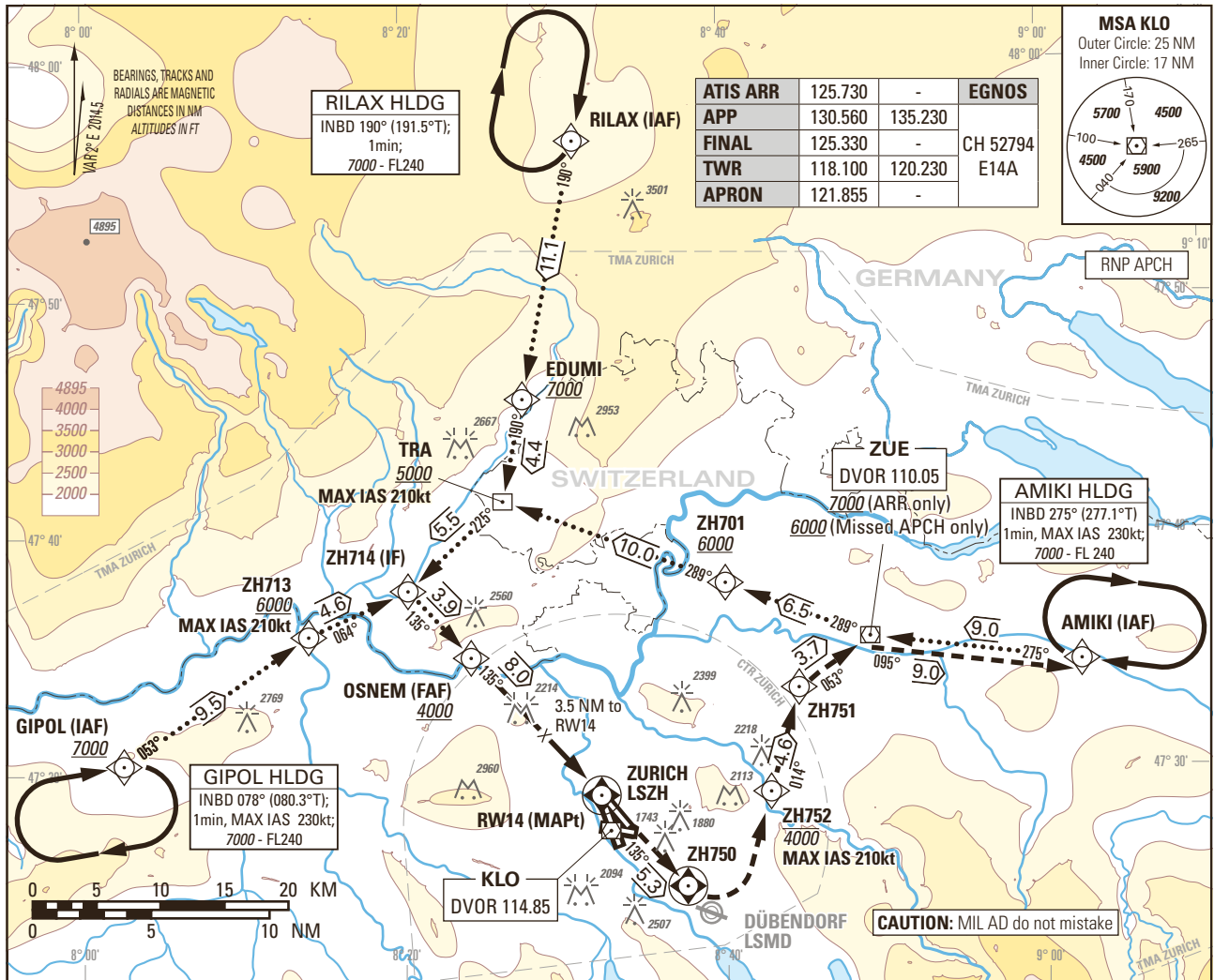


Instrument Approach Chart
(IAC) - ICAO

AD ELEV 1417ft

TRANSITION LEVEL by ATC
TRANSITION ALTITUDE 7000

ZURICH LSZH
RNP RWY 14



OBSTACLE CLEARANCE ALTITUDE (HEIGHT)	A				B				C				D						
	1990 (590)				1860 (460)				1880 (480)				1890 (490)				1910 (510)		
STRAIGHT-IN	LNAV				LNAV/VNAV				LPV CAT I				LPV CAT I						
	1575 (173)				1582 (180)				1592 (190)				1601 (199)						
DECISION ALTITUDE (HEIGHT)		A				B				C				D					
STRAIGHT-IN		1602 (200)				1602 (200)				1602 (200)				1602 (200)					
Circling ¹⁾²⁾		2370 (960)				2470 (1060)				2740 (1330)				2820 (1410)					
DIST THR		8	7	6	5	4	3	2	1	8	7	6	5	4	3	2	1		
recommended CROSSING ALT		4000	3680	3360	3040	2720	2410	2090	1770	4000	3680	3360	3040	2720	2410	2090	1770		
recommended CROSSING HGT		2600	2280	1960	1640	1320	1010	690	370	2600	2280	1960	1640	1320	1010	690	370		

ROD	GS kt	90	110	130	150
	FT/MIN	477	584	690	796
NOTE					
¹⁾ Height above aerodrome ELEV 1417ft, circling prohibited in a sector S of extended RCL 28 and W of extended RCL 14. ²⁾ All circling procedures temporarily suspended.					
CAUTION					
0.3 NM before THR 14 Visual Segment Surface (VSS) penetrated by trees up to 1480ft AMSL (LNAV & LNAV/VNAV only).					

COR: APP FREQ (WEF 22APR2021)

Input data

Operation Type	0
SBAS Provider	1
Airport Identifier	LSZH
Runway	14
Runway Direction	0
Approach Performance Designator	0
Route Indicator	
Reference Path Data Selector	0
Reference Path Identifier	E14A
LTP/FTP Latitude	472855.5305N
LTP/FTP Longitude	0083209.8680E
LTP/FTP Ellipsoidal Height (metres)	474.7
FPAP Latitude	472740.6480N
Delta FPAP Latitude (seconds)	-74.8825
FPAP Longitude	0083352.0595E
Delta FPAP Longitude (seconds)	102.1915
Threshold Crossing Height	15.0
TCH Units Selector	1
Glidepath Angle (degrees)	3.00
Course Width (metres)	105.00
Length Offset (metres)	0
HAL (metres)	40.0
VAL (metres)	35.0

Output data

Data Block	10 08 1A 13 0C 0E 00 00 01 34 31 05 D5 89 60 14 18 CD A9 03 8B 26 FB B6 FD 5F 1E 03 2C 81 2C 01 64 00 C8 AF 60 6A BC CE
Calculated CRC Value	606ABCCE

Required Additional Data

ICAO Code	LS
LTP/FTP Orthometric Height (metres)	427.4
FPAP Orthometric Height (metres)	427.3