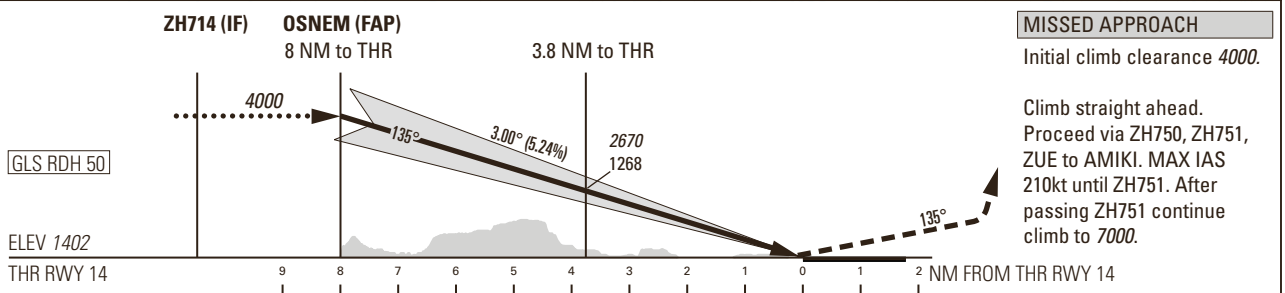
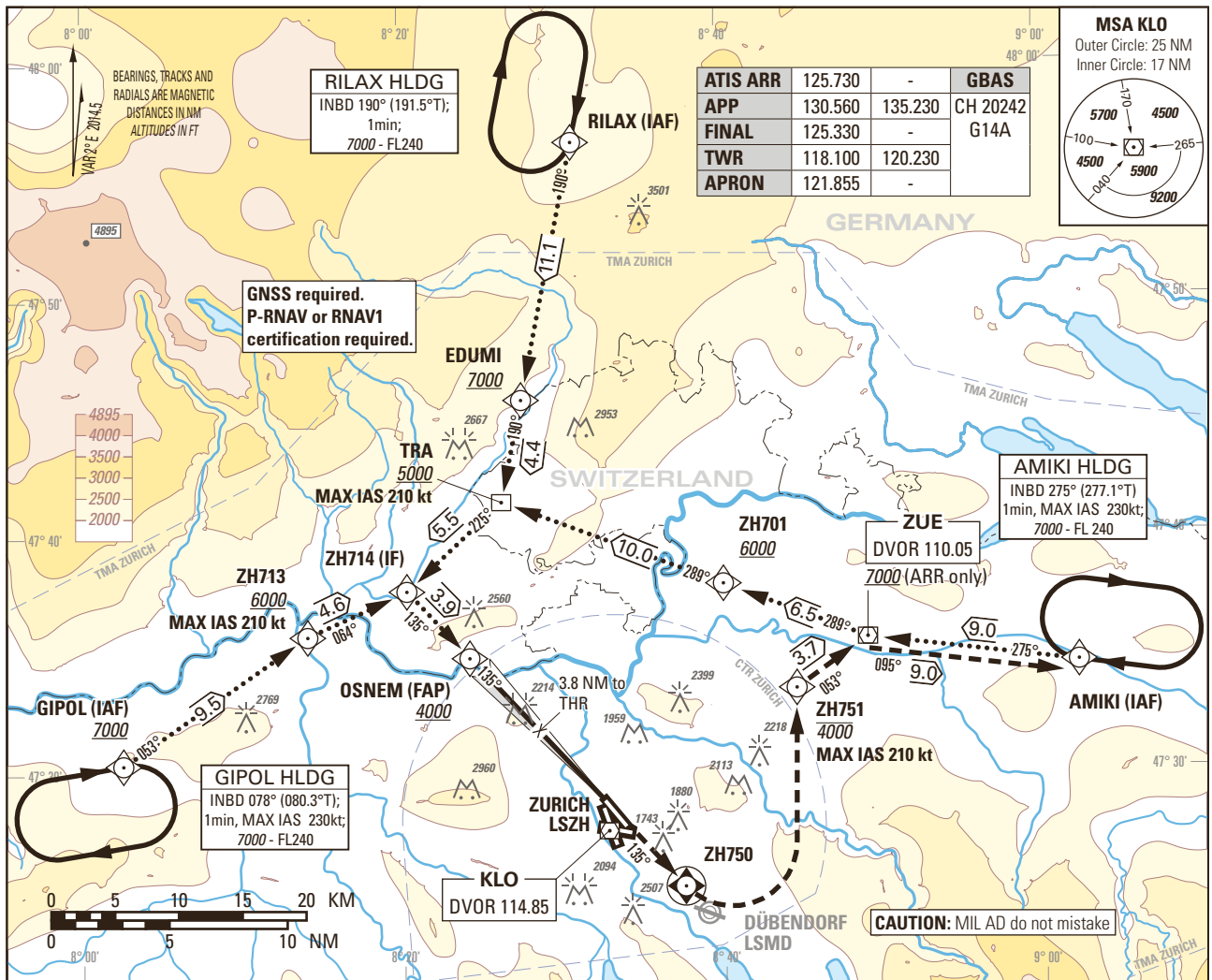


Instrument Approach Chart
(IAC) - ICAO

AD ELEV 1417ft

TRANSITION LEVEL by ATC
TRANSITION ALTITUDE 7000

ZURICH LSZH
GLS RWY 14



Missed APCH climb gradient requirement	To Altitude	STRAIGHT-IN APPROACH				
		OBSTACLE CLEARANCE ALTITUDE (HEIGHT)				
		A	B	C	D	D _L
2.5%	N/A	1614 (212)	1624 (222)	1634 (232)	1644 (242)	
3.0%	2400	1555 (153)	1564 (162)	1575 (173)	1587 (185)	1592 (190)
		DECISION ALTITUDE (HEIGHT)				
2.5%	N/A	1614 (212)	1624 (222)	1634 (232)	1644 (242)	
3.0%	2400	1602 (200)				
Circling ¹⁾²⁾		OBSTACLE CLEARANCE ALTITUDE (HEIGHT)				
		2370 (960)	2470 (1060)	2740 (1330)	2820 (1410)	

ROD	GS kt	90	110	130	150
		FT/MIN	477	584	690

NOTE
¹⁾ Height above aerodrome ELEV 1417ft, circling prohibited in a sector S of extended RCL 28 and W of extended RCL 14.
²⁾ All circling procedures temporarily suspended.

COR: APP FREQ (WEF 22APR2021)

THIS PAGE INTENTIONALLY LEFT BLANK