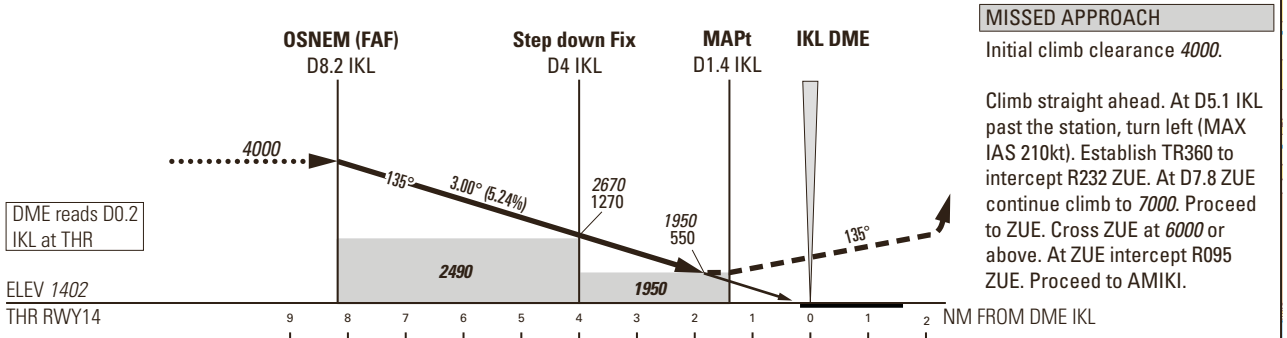
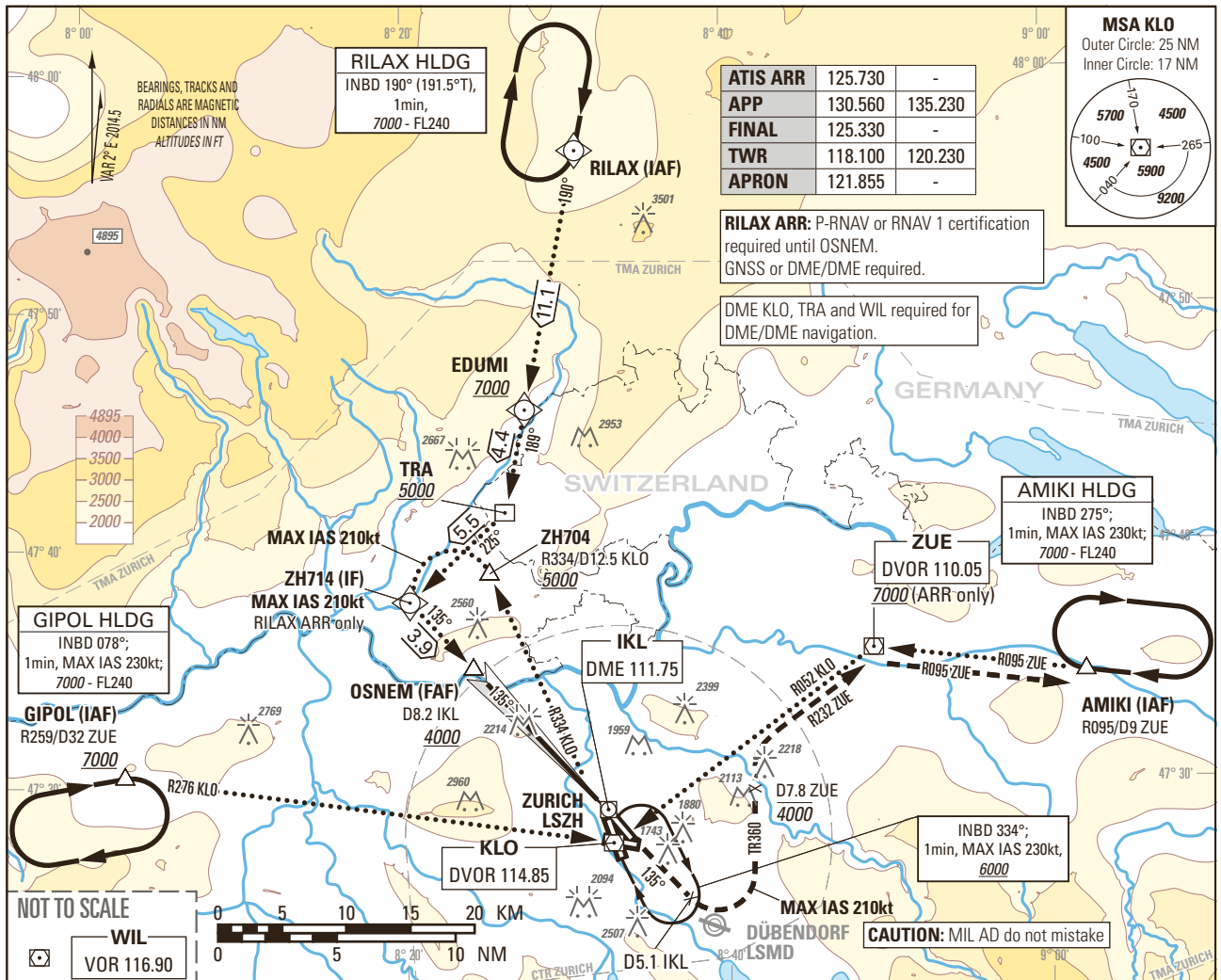


Instrument Approach Chart
(IAC) - ICAO

AD ELEV 1417ft

TRANSITION LEVEL by ATC
TRANSITION ALTITUDE 7000

ZURICH LSZH
LOC RWY 14



DIST THR	8	7	6	5	4	3	2
recommended CROSSING ALT	3940	3620	3300	2990	2670	2350	2030
recommended CROSSING HGT	2540	2220	1900	1590	1270	950	630

ROD	GS kt	90	110	130	150
	FT/MIN	477	584	690	796

NOTE

¹⁾ Height above aerodrome ELEV 1417ft, circling prohibited in a sector S of extended RCL 28 and W of extended RCL 14.

²⁾ All circling procedures temporarily suspended.

OBSTACLE CLERANCE ALTITUDE (HEIGHT)	A	B	C	D	D _L
STRAIGHT-IN APPROACH	1950 (550)				
CIRCLING ^{1) 2)}	2370 (960)	2470 (1060)	2740 (1330)	2820 (1410)	

COR: APP FREQ (WEF 22APR2021)

THIS PAGE INTENTIONALLY LEFT BLANK