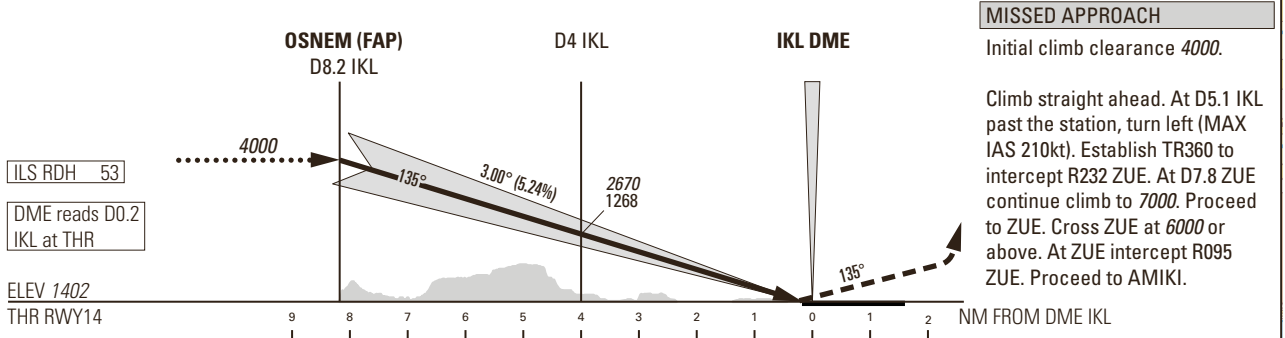
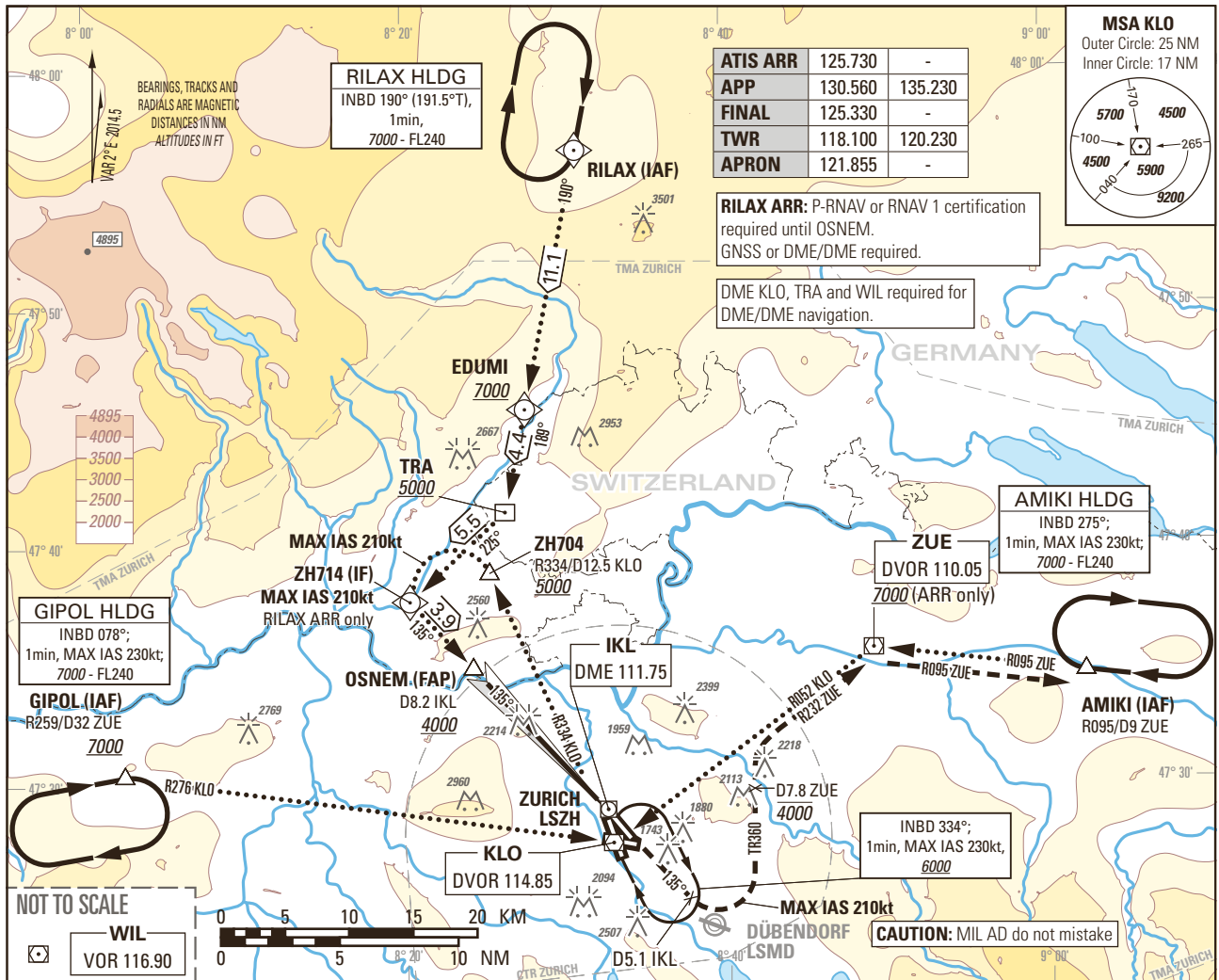


Instrument Approach Chart
(IAC) - ICAO

AD ELEV 1417ft

TRANSITION LEVEL by ATC
TRANSITION ALTITUDE 7000

ZURICH LSZH
ILS RWY 14
CAT II & III



OBSTACLE CLEARANCE ALTITUDE (HEIGHT)						
STRAIGHT-IN APPROACH		A	B	C	D	D _L
CAT I	pressure altimeter	1555 (153)	1565 (163)	1575 (173)	1588 (186)	1591 (189)
	radio altimeter	1463 (61)	1470 (68)	1480 (78)	1496 (94)	1502 (100)
CAT II	radio altimeter and autopilot	1460 (58)	1470 (68)	1480 (78)	1496 (94)	1499 (97)
	DECISION ALTITUDE (HEIGHT) ³⁾	A	B	C	D	D _L
CAT I	pressure altimeter			1602 (200)		
	radio altimeter and autopilot			1502 (100)		

CIRCLING ¹⁾²⁾	A	B	C	D	D _L
		2370 (960)	2470 (1060)	2740 (1330)	2820 (1410)

ROD	GS kt	90	110	130	150
		FT/MIN	477	584	690

NOTE

¹⁾ Height above aerodrome ELEV 1417ft, circling prohibited in a sector S of extended RCL 28 and W of extended RCL 14.

²⁾ All circling procedures temporarily suspended.

³⁾ Radio altimeter reading at CAT I DH 187ft, at CAT II DH 95ft, for lower minima PPR FOCA.

COR: APP FREQ (WEF 22APR2021)

THIS PAGE INTENTIONALLY LEFT BLANK