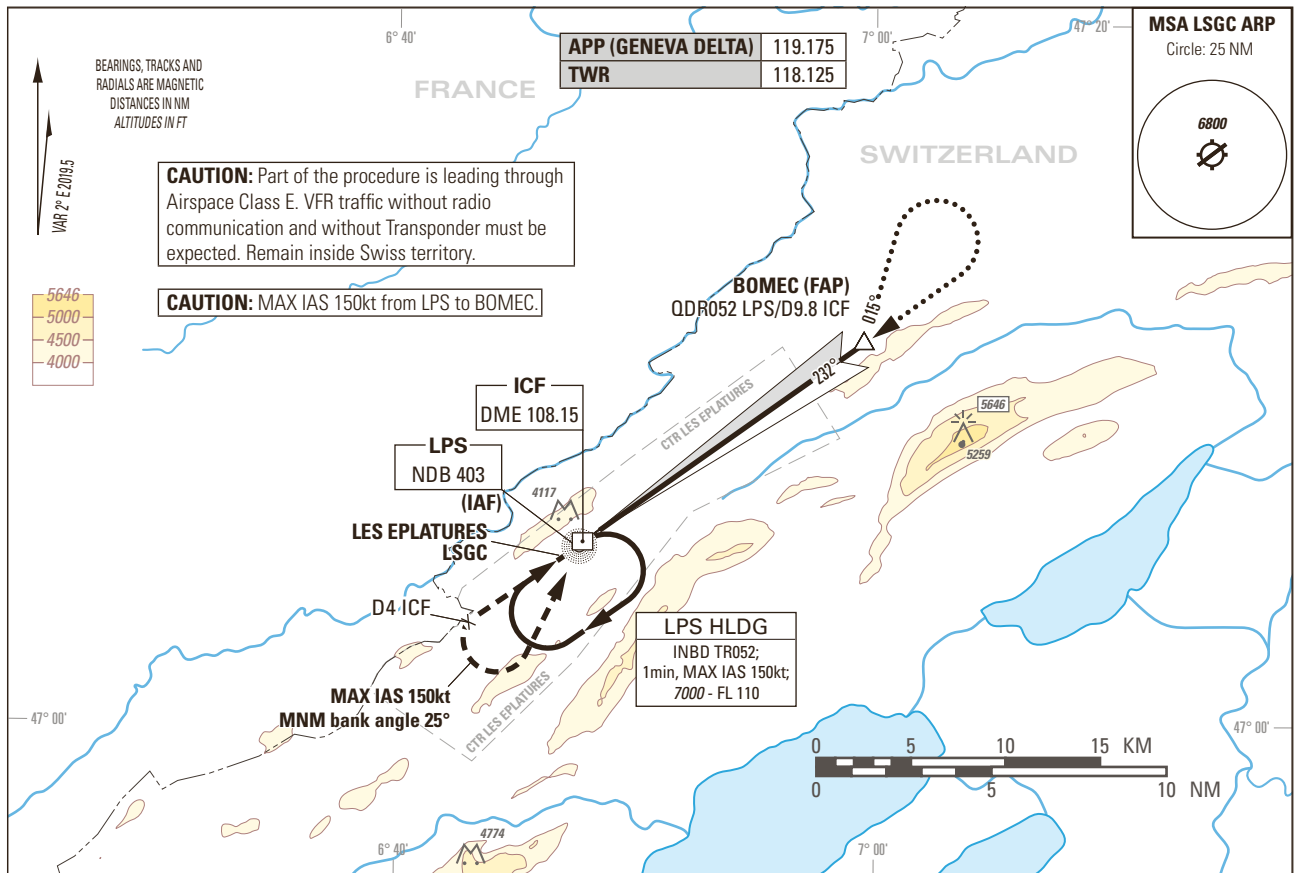


Instrument Approach Chart  
(IAC) - ICAO

AD ELEV 3368ft

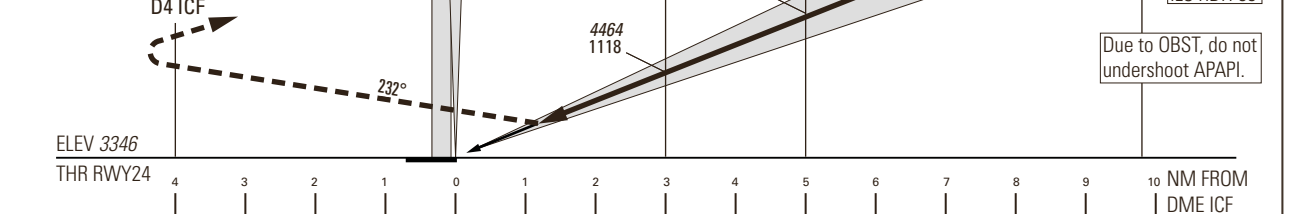
TRANSITION LEVEL by ATC  
TRANSITION ALTITUDE 7000

LES EPLATURES LSGC  
ILS RWY 24  
ACFT CAT A/B



**MISSED APPROACH**

Initial climb clearance 7000.  
Climb straight ahead. At D4 ICF turn left (MAX IAS 150kt during turn, MNM bank angle 25° to remain inside controlled airspace) to LPS NDB and hold.  
MNM climb gradient 5.7% to 7000 to remain inside controlled airspace.



Missed APCH climb gradient requirement	STRAIGHT-IN APPROACH		VIS m		
	A	B <sup>2)</sup>			
2.5%	4040 (694)	4050 (704)	1500		
5.0% up to 4700	3699 (353)	3712 (366)			
	DECISION ALTITUDE (HEIGHT) / DA (HEIGHT)		1500		
2.5%	4040 (694)	4050 (704)			
5.0% up to 4700	3846 (500)				
Circling <sup>1)</sup>	4640 (1272)	5010 (1642)			
ROD	GS kt	90	110	130	150
	FT/MIN	558	682	806	930

DME ICF DIST	1	2	3	4	5	6	7	8	9
recommended CROSSING ALT	3720	4090	4460	4840	5210	5580	5950	6320	6690
recommended CROSSING ALT	374	744	1114	1494	1864	2234	2604	2974	3344

**REMARK**  
AIRAC date MAR - OCT 31: Intense GLD ACT within APCH Sector and ATS Routes.  
No IFR APCH when DME u/s.

**CAUTION**  
0.7 NM BFR THR 24 Visual Segment Surface (VSS) penetrated by trees, terrain and OBST up to 3516ft AMSL.  
Gliders parked near RWY edge.

**NOTE**  
<sup>1)</sup> Circling shall remain within CTR limits.  
<sup>2)</sup> Higher CAT of ACFT may use the same PROC if they comply with the CAT B restrictions.

COR: Missed APCH text (WEF 22APR2021)

THIS PAGE INTENTIONALLY LEFT BLANK